

AGRICOLA



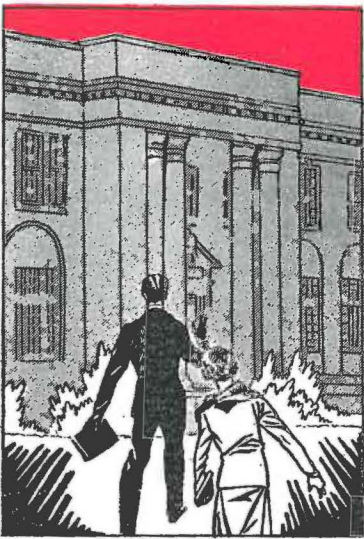
1933

ARKANSAS POLYTECHNIC COLLEGE



EX · LIBRIS

THE



373.05

Ar 4.00

1933

Capit

AGRICOLA

1 · 9 · 3 · 3

YEAR BOOK

ARKANSAS POLYTECHNIC COLLEGE

7213

Published by the Students of

ARKANSAS POLYTECHNIC COLLEGE

Russellville, Arkansas



D E D I

In appreciation of his interest in the welfare of the students, individually and collectively, and in recognition of the outstanding service which he is rendering Arkansas Tech, the staff dedicates this volume of the Agricola to President J. W. Hull

CATION





FOREWORD

That this book, which has been intended as a permanent pictorial record of one of the happiest years of our lives, may provide now and in after years a basis of memories of cherished associations is the earnest wish of the Agricola staff.

CONTENTS



Administration

Classes

Features

Athletics

Activities

Organizations

Advertising

THE AGRICOLA

COPYRIGHT 1933

ALFRED J. CRABAUGH

Faculty Supervisor

MORRIS BEST

Business Manager

PRINTING BY
RUSSELLVILLE PRINTING CO.
RUSSELLVILLE, ARK.

ENGRAVING BY
PEERLESS ENGRAVING CO.
LITTLE ROCK, ARK.

PHOTOGRAPHY BY
REID'S STUDIO
RUSSELLVILLE, ARK.



ADMINISTRATION

THE PRESIDENT

BY WOODROW PETTY

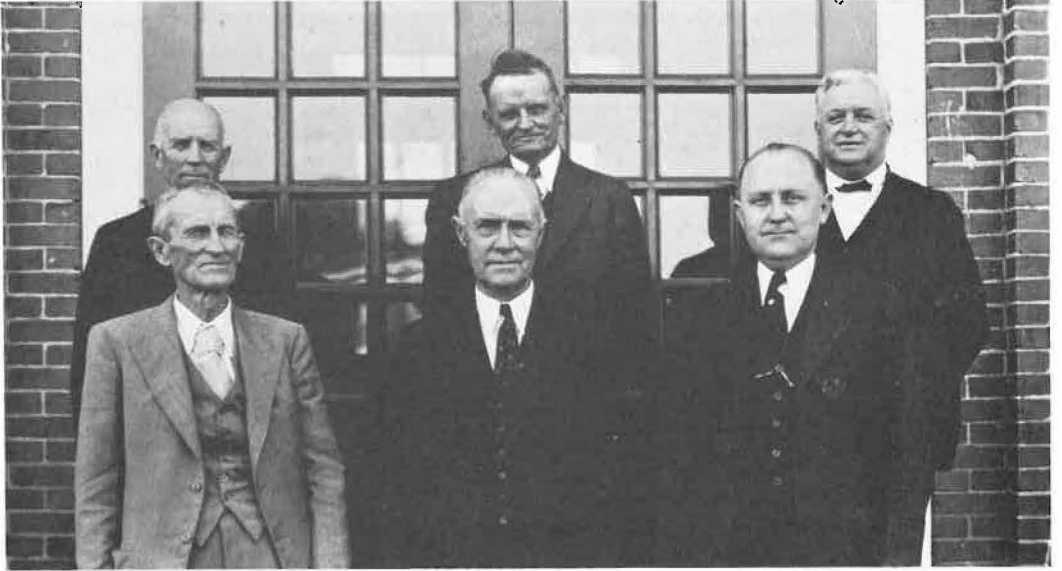
Joseph William Hull, president of Arkansas Polytechnic College, came to the college in March, 1932. Mr. Hull brought with him an outstanding record as a teacher, business man, and community builder. A graduate of Mississippi A. and M. and of the Peabody College for Teachers, Mr. Hull taught vocational agriculture for thirteen years.

Studying the problems of agriculture continually while teaching, Mr. Hull organized at Danville the first chapter of the Future Farmers of America in this state. Glen Farrow, Star Farmer of America in 1931, was a student under Mr. Hull. Farrow credited the most of his success to Mr. Hull, his Smith-Hughes instructor. In 1929, Mr. Hull was selected as the "Master Teacher" of vocational agriculture in the Southern states, and the same year the Danville F. F. A. chapter won third place and a \$200 prize in the National F. F. A. convention. The following year the chapter took first place money of \$500.

Since coming to Arkansas Tech to take over the task of directing the mill that grinds out future citizens of Arkansas, Mr. Hull has not slackened pace but has only spurred on to greater efforts. Practicing economy in every move, Mr. Hull has caused Tech to take on a neater appearance. He has rebuilt the agriculture and science hall, built a new athletic field, remodeled and improved the dormitories, remodeled the offices in Main, bought new steel stacks for the library, and built new sidewalks. He has operated the college within its income during one of the worst years of the depression, and has provided for a new boys' dormitory. His leadership has inspired the students on to higher scholastic achievements until the report of the North Central Association about Arkansas Tech declares that "everything is highly satisfactory."



BOARD OF TRUSTEES



*Back row: W. H. Johnson, J. E. Chambers, Dr. R. L. Smith.
Front row: J. B. Paine, J. S. Turner, President J. W. Hull*

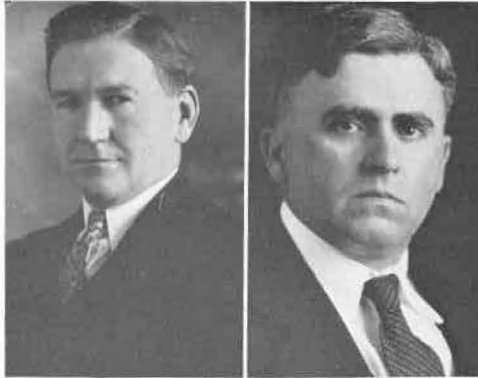
Although regretting the retirement from the Board of Trustees of Colonel Henry Stroupe of Paris, President of the Board, and J. B. Paine, of Van Buren, Secretary, after more than twenty years of service, students and friends of the institution feel that Arkansas Tech is exceptionally fortunate in the appointment of W. H. Johnson, of Fort Smith, and Mrs. Ethel Cole Cunningham, of Dardanelle, to fill the vacancies. Mr. Johnson, who is widely known and respected as a banker and business man, has been actively interested in school problems for many years and has a broad knowledge of school conditions and needs in western Arkansas. Mrs. Cunningham, who for the past two sessions has been the sole woman member of the state legislature, has the respect and confidence of the entire state because of her knowledge of public affairs and her concern for the educational welfare of Arkansas boys and girls.



BOARD OF TRUSTEES

- J. S. TURNER, *President* Ozark
- MRS. ETHEL C. CUNNINGHAM, *Secretary* . Dardanelle
- DR. R. L. SMITH Russellville
- J. E. CHAMBERS Danville
- W. H. JOHNSON Fort Smith

G. R. TURRENTINE
Dean, Education



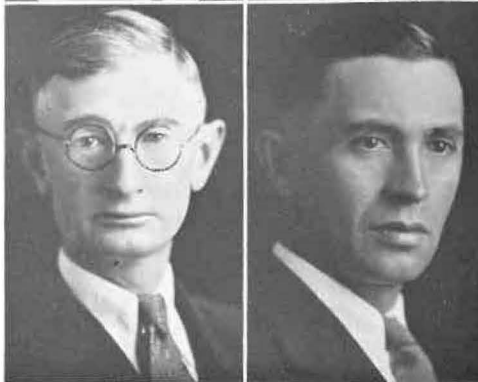
T. A. DuLANEY
History

BESSIE PARKER
Home Economics



CLYDE R. NICHOLS
Engineering

E. S. TOMLINSON
Botany



WARREN R. STEWART
Animal Husbandry



ALFRED J. CRABAUGH
Vice-President, English

MAGGIE MAE DAVIS
Mathematics



C. A. HUGHES
Agronomy

JOHN E. TUCKER
Dean of Men, Chemistry



MAUDE L. ROCKS
French

N. F. COLEDGE
Psychology

PAULINE COX
Public Speaking



E. O. BROWN
Athletics

PAULINE AUSTIN
Music



REV. CLYDE V. HICKERSON
Bible

MARGARET MARTENS
Home Economics



W. O. YOUNG
Secretary



H. W. DEAN
Supt. Buildings and Grounds



EDNA HOOD FERGUSON
Registrar, Economics



MARVIN WILLIAMSON
Band and Orchestra



MYRTLE ROUSH
Librarian



A. N. SATTERFIELD
Steward



W. J. COWAN
Athletics



*Of All the schools I love the best,
A. P. C., my A. P. C.
To thee I'll cling and stand the test,
A. P. C., my A. P. C.
With friendship, loyalty, and cheer
I'll serve my brothers far and near,
And hold thy precepts ever dear,
Alma Mater; A. P. C.*

*So louder now we'll swell the strain,
A. P. C., my A. P. C.
Inspire our hearts, thy heights to gain
A. P. C., my A. P. C.
Let truth and honor be the goal,
Exalt the life, make sweet the soul,
While thousands sing from pole to pole
Alma Mater; A. P. C.*



Administration Building

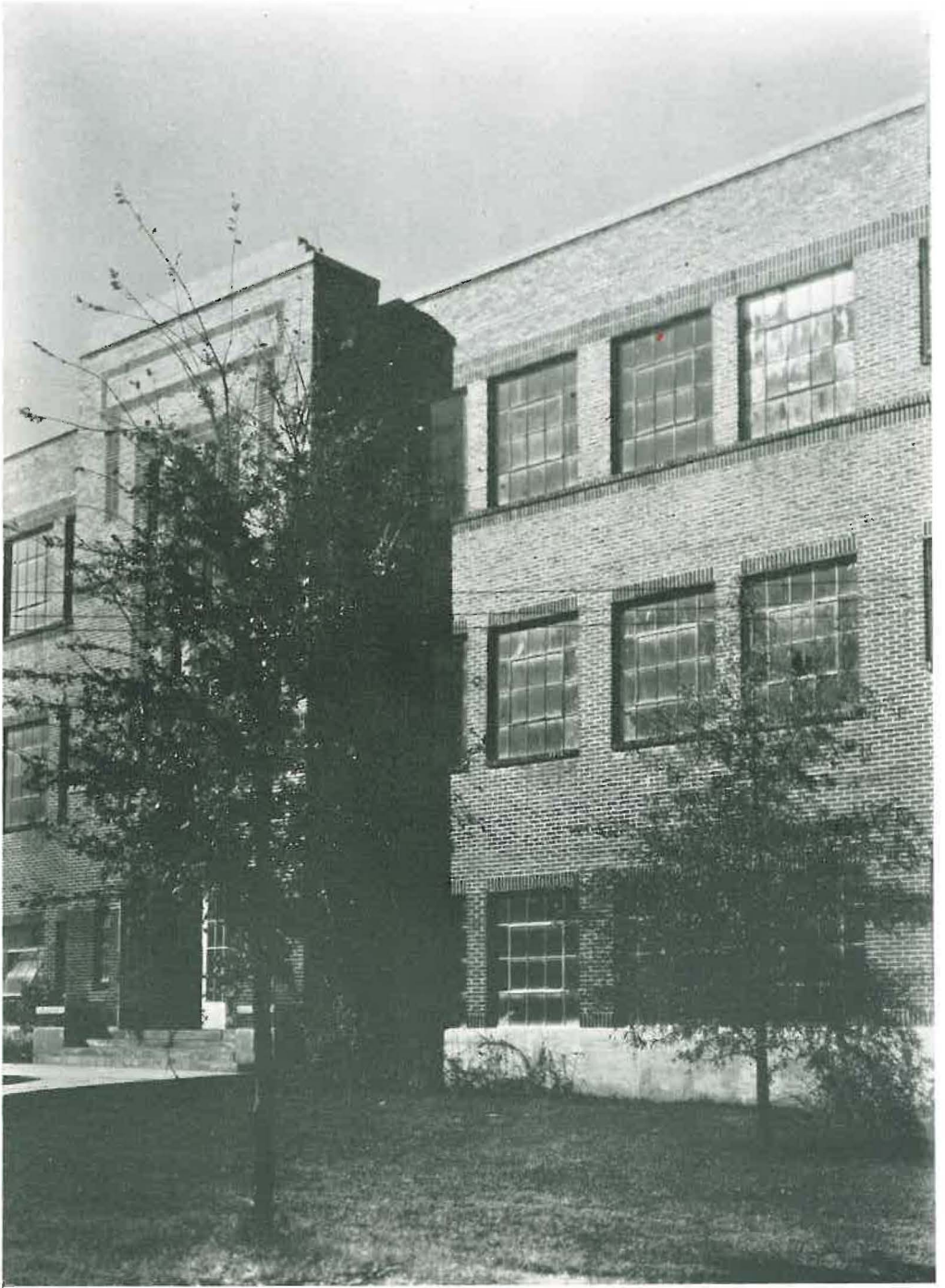
7213



Girls' Dormitories



South Dormitory



Bailey Hall



Dining Hall

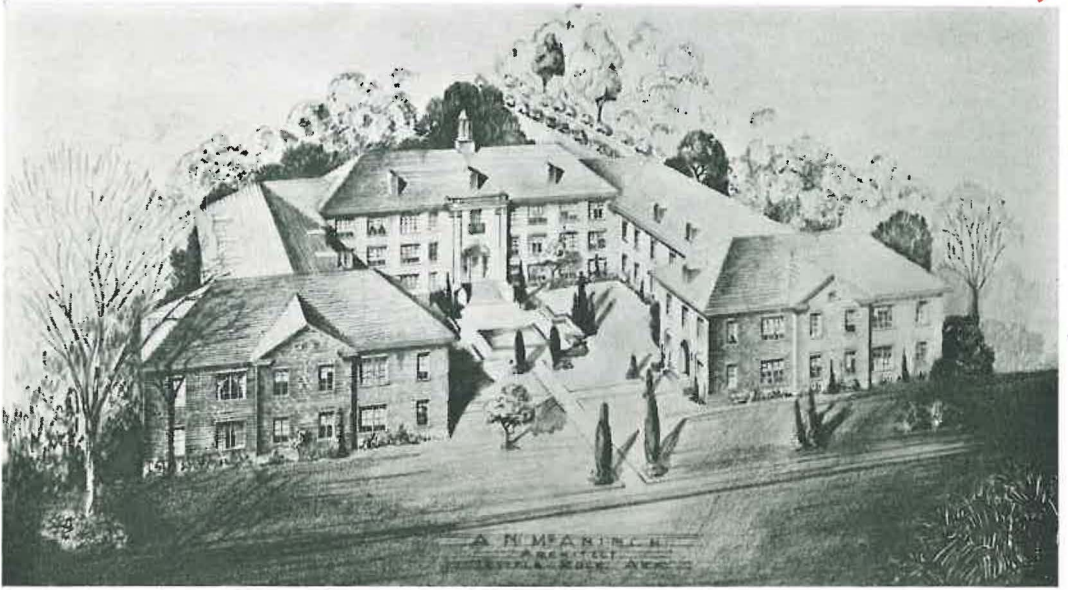


Leighton Hall



The Old Dormitories
for Boys

ARKANSAS POLYTECHNIC COLLEGE



R. F. C. FINANCING NEW DORMITORY

BY WOODROW PETTY

A loan of \$67,000 from the Reconstruction Finance Corporation to Arkansas Tech will permit the changing of the three boys' dormitories into the beautiful, modern building pictured above.

The loan is sufficiently large to provide an entirely new dormitory. The interior of the present dormitories will be wrecked completely and built back, fireproofed, modernized, and remodeled. The capacity of the dormitory will be increased to 210 students by the addition of the wings from the West dormitory to the North and South dormitories. The court created by the U-shaped hall will be landscaped, a small pool constructed, and other beautification steps taken.

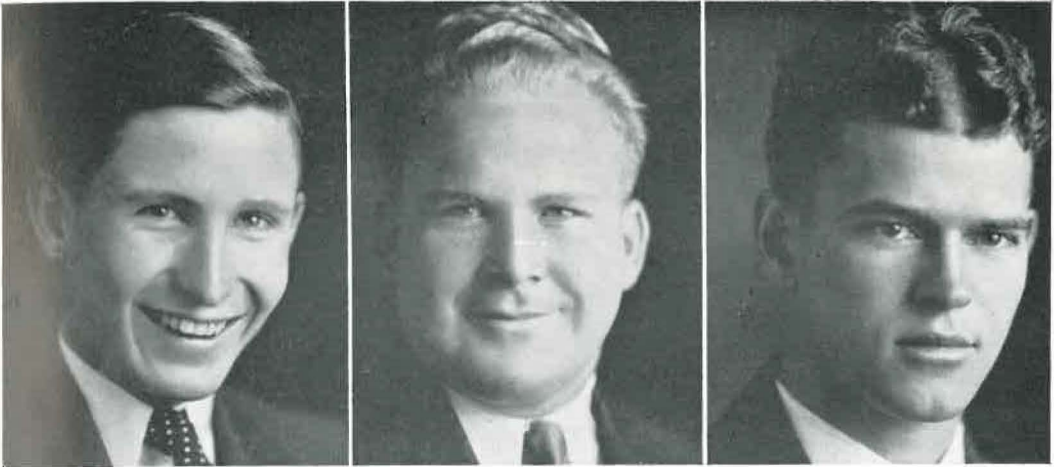
One-half of the first floor in each of the smaller dormitories will be created into lounges, or recreation rooms, and the other half of the floor will be converted into apartments for the professors who will reside in the dormitories.

College officials state that the dormitory will be one of the finest in the state when completed. Work will start on the project immediately after the regular session and the building will be completed in time for the regular 1933-34 session.

New Dormitory for Boys



C L A S S E S

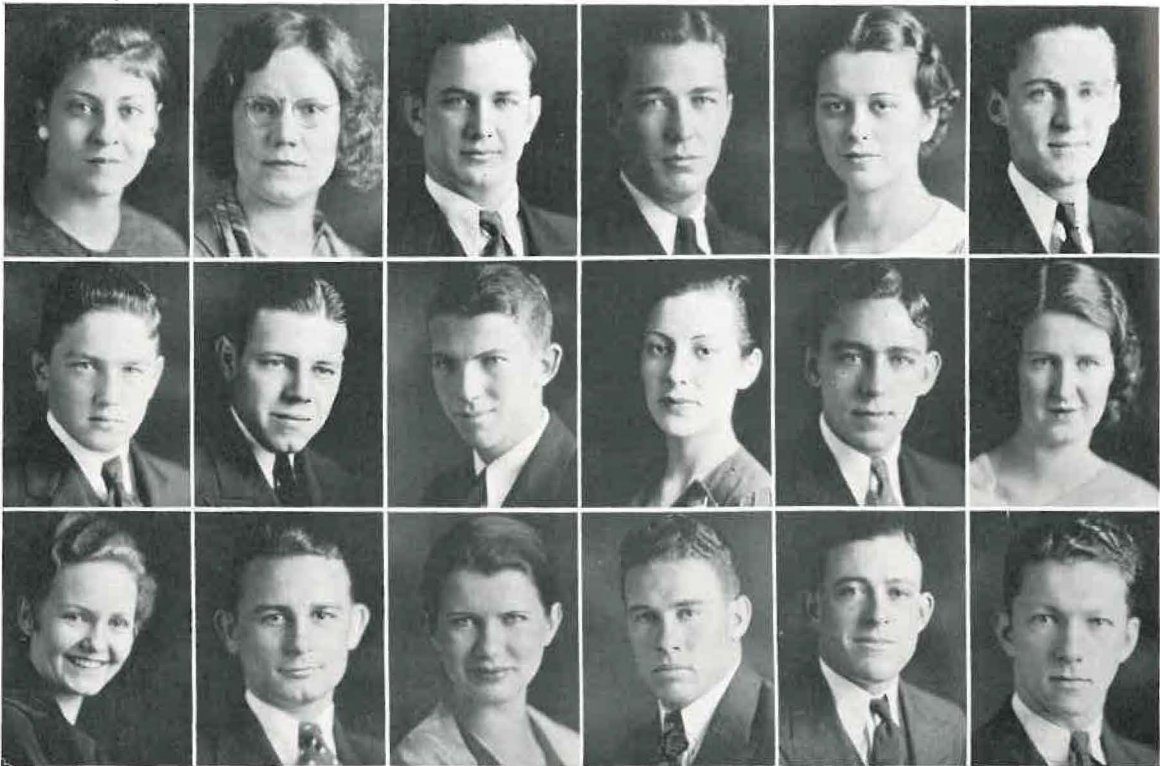


SOPHOMORE CLASS

OFFICERS

HARRELL SIMPSON *President*
 DAVE WOODSON *Vice-President*
 RALPH RAWLINGS *Secretary-Treasurer*

AGRICOLA



ANDERSON, LOUISE *Dardanelle*
French Club, Y. W. C. A.

AVANCE, JEAN *Mulberry*
Home Ec. Club.

BAILEY, ROBERT *Russellville*
Pep Squad.

BARNETT, LOUIE *Prattsville*
Student Council.

BAYLISS, MARY CATHERINE . . . *Russellville*,
Science Club, Dramatic Club, Agricola, French
Club, Dads Day Maid '32.

BELL, JOE *Helena*
Band, Orchestra.

BERNARD, HARRY *Russellville*
Engineers Club.

BEST, MORRIS *McCrary*
French Club, Business Manager, Agricola.

BLAIR, RALPH *Lamar*
Pep Squad, Agri Club.

BLAKELY, SARA ETHEL . . . *Shawnee, Okla.*
Home Ec. Club, Tuba Agricolae.

BRADLEY, SID *Russellville*

BRASELTON, RUTH *Russellville*
Band, Drum Corps, History Club.

BREEDLOVE, RUBY MARY . . . *Russellville*
French Club.

BRINK, KERWIN *DeVall's Bluff*
Band, Orchestra.

BUCHANAN, JEWELL *Foreman*
Y. W. C. A.

BURCH, ARTHUR *Hale Center, Tex.*
Student Council, Dramatic Club, "T" Association,
Track '33, Football '31, '32, Basketball '32, '33.

BURGESS, THOMAS *Lamar*
French Club, Science Club.

BURNETT CLARENCE *Atkins*
History Club.

AGRICOLA



BURRIS, JESSIE MARIE *Foreman*
Y. W. C. A., Home Ec. Club.

CALDWELL, MILDRED *Salem*
Y. W. C. A.

CAMPBELL, HAZEL *Pine Bluff*

CATO, JACK *Greenbrier*
Baseball '32, '33, Agri Club, F. F. A., "T" Association, Pep Squad.

CAZORT, CHARLES *Lamar*
Science Club.

CHEEK, FANNIE RHEA *Atkins*
Home Ec. Club, Agri Day Queen '33.

CHURCHILL, FLOYD *Hector*
"T" Association, Football '30, '31, '32, Baseball '30, '31, '32, Basketball '31, '32.

CLONINGER, FRED *Atkins*
Engineers Club.

COLE, RALPH *Alma*
Science Club.

CRISWELL, OLIVER *Purcell, Okla.*
"T" Association, Football '29, '30, '31, Captain '32.

CUMMINS, HAROLD *Prairie View*
Engineers Club, Glee Club.

DARR, MARY RUTH *Atkins*
History Club, French Club.

DAVIDSON, CAROLINE *Ozark*
History Club, French Club, Y. W. C. A.

DEFIR, DAVID *McGehee*

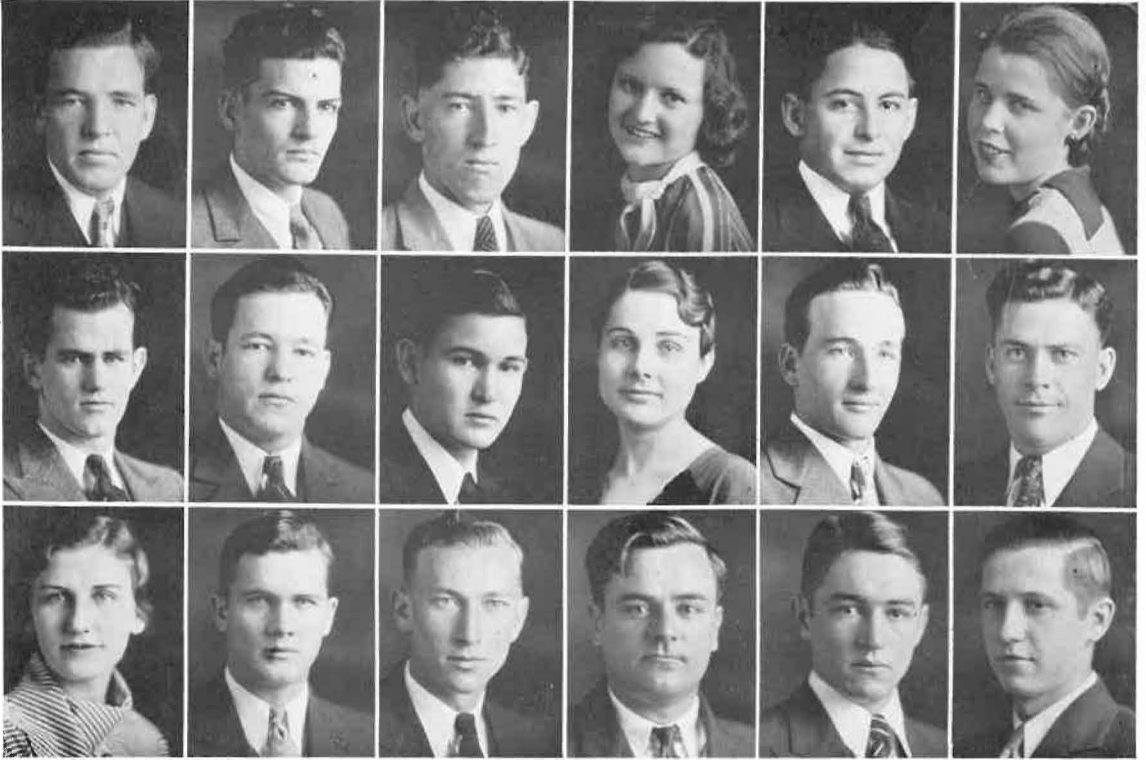
DENTON, LAWRENCE *Russellville*
Y. M. C. A.

DOUGLASS, MARGARET *Morrilton*
Dramatic Club, Home Ec. Club, L of L Club, Drum Corps.

EDSON, NORA LEE *Centerville*

EIKLEBERRY, ROBERT *Havana*
Y. M. C. A., Agri Club, F. F. A.

AGRICOLA



EVANS, RAY *Atkins*
French Club.

FISH, CARROLL *Gould*
Science Club, Pen & Ink Club.

FLETCHER, LEMUEL *Chismville*
Engineers Club.

FOUNTAIN, DOROTHY *Wynne*
Y. W. C. A., History Club, L of L Club, Drum Corps.

FULLEN, OTHEL *Belleville*
Agri Club, F. F. A.

GARDNER, CLAUDINE *Russellville*

GARDNER, ELLIS *Russellville*
Football '32, "T" Association, French Club.

GARDNER, MILTON *Tupelo*
President, Student Council.

GAULT, MILTON *Danville*
F. F. A., Agri Club.

GIBSON, EULETA *Atkins*
History Club, French Club, Agricola Staff.

GIBSON, JAMES DYER *Atkins*
"T" Association, Baseball '31, '32, '33, History Club

GOODNER, BILL *Mt. Ida*
Science Club, Glee Club.

GRIFFIN, EDNA *Tahlequah, Okla.*
Home Ec. Club.

HALSEY, EARL *Greenbrier*
"T" Association, Agri Club, Basketball '32, '33.

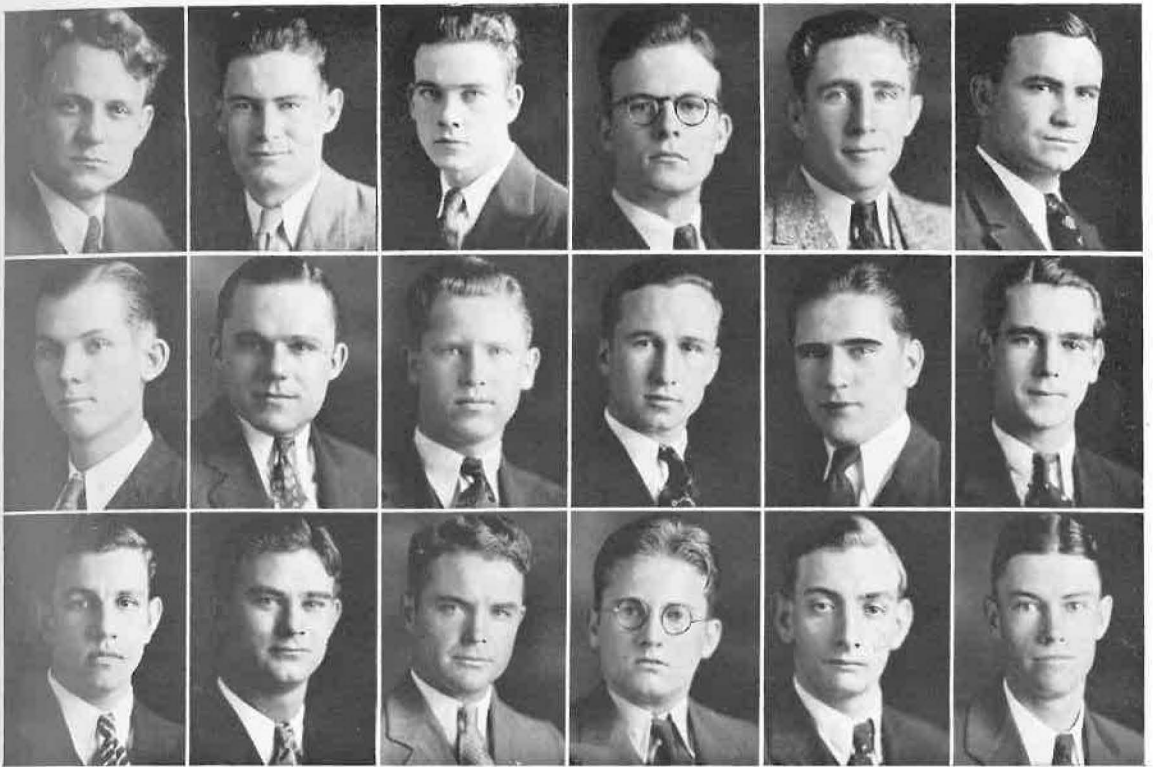
HANSEN, CLAY *Ashflat*
Agri Club, Y. M. C. A., F. F. A.

HARRIS, VERLIA *Dardanelle*

HAWTHORNE, WOODROW *Waldron*
"T" Association, Track '33, Engineers Club.

HEAD, ROBERT *Little Rock*
Agri Club.

AGRICOLA



HEATH, JIMMIE *Malvern*
Student Council, Engineers Club, Agricola.

HEFLEY, ERNEST *Hartford*
French Club.

HENRY, ANDREW *Russellville*
Science Club.

HENRY, ARNOLD *Russellville*
French Club, Science Club, Agricola, Student Council.

HUGHES, MILTON *McRae*
Bible Study Group.

HORNE, HARLIE *Paris*
Baseball '32, '33, Football '32, "T" Association.

HOLMES, EDWARD *Thornburg*
Y. M. C. A.

HODGES, CLAY *Little Rock*

HINES, JAMES *Russellville*
Engineers Club.

HENSON, EUGENE *Russellville*

INGRAM, BEN *Russellville*
Pen & Ink, French Club, History Club, Agricola, Y. M. C. A., Debate '32.

INGRAM, JOHN *Russellville*
Band, Orchestra.

JACOBS, HANSEL *Lamar*
Y. M. C. A.

JEFFRIES, BID *McCrary*
"T" Association, Football '30, '31, '32.

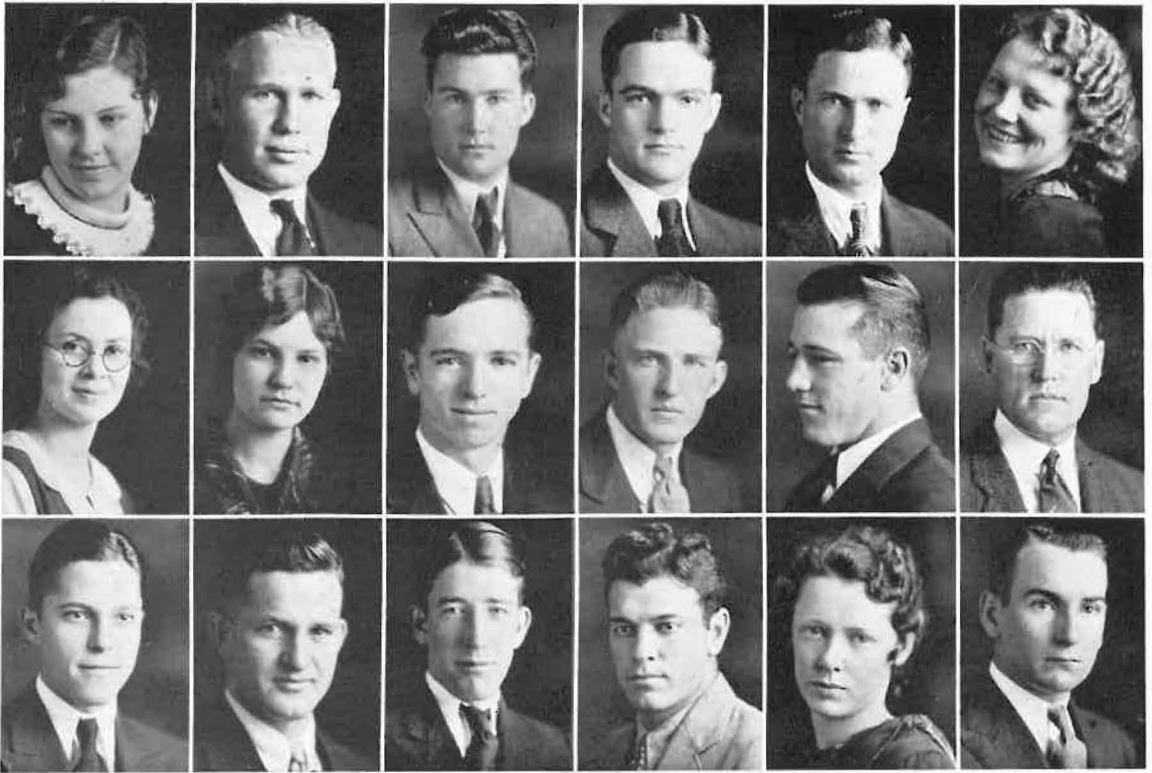
JONES, CREO *Mt. Ida*
Glee Club.

KEETON, FRANCIS *Van Buren*
Engineers Club.

KINZER, JOHN ANDREW . . . *Russellville*

KNIGHT, GRADY *Ouachita*
Agri Club.

AGRICOLA



LANDERS, TREVA *Salem*
Drum Corps, Y. W. C. A.

LANGLEY, HERSHEL *Dalark*
Football '29, '30, '31, '32, "T" Association.

LEWIS, BROWN *Russellville*
Track '33, Baseball '33.

LINDSEY, WILLIAM ARTHUR *Dardanelle*
Agricola '33.

LITTLE, HURSTLE *Opal*

LLOYD, WAYNE *Paris*
Bank, Dramatic Club, Orchestra, Agricolae, L of L Club, History Club, Y. W. C. A.

LYTTLE, ELIZABETH *Russellville*
Dramatic Club, French Club, Pen & Ink Club.

MCALISTER, KATY D. *Russellville*
Home Ec. Club, Drum Corps.

MCCARTY, GORDON *Helena*
Engineers Club, Editor, Tuba Agricolae, Debate '33.

MCCLELLAND, CHARLES *Cedar Glades*
Y. M. C. A., Pen & Ink, Bible Study Group, Tuba Agricolae.

MCCORKLE, LOUIS *Kingston, Okla.*
Football '31, '32, Track '32, '33, "T" Association.

MCGUIRE, T. R. *Russellville*

MCKENZIE, CHARLES *Ola*
Glee Club, History Club.

MCMINDES, CALVIN *Yelleville*
"T" Association, Agri Club, Basketball '32, '33.

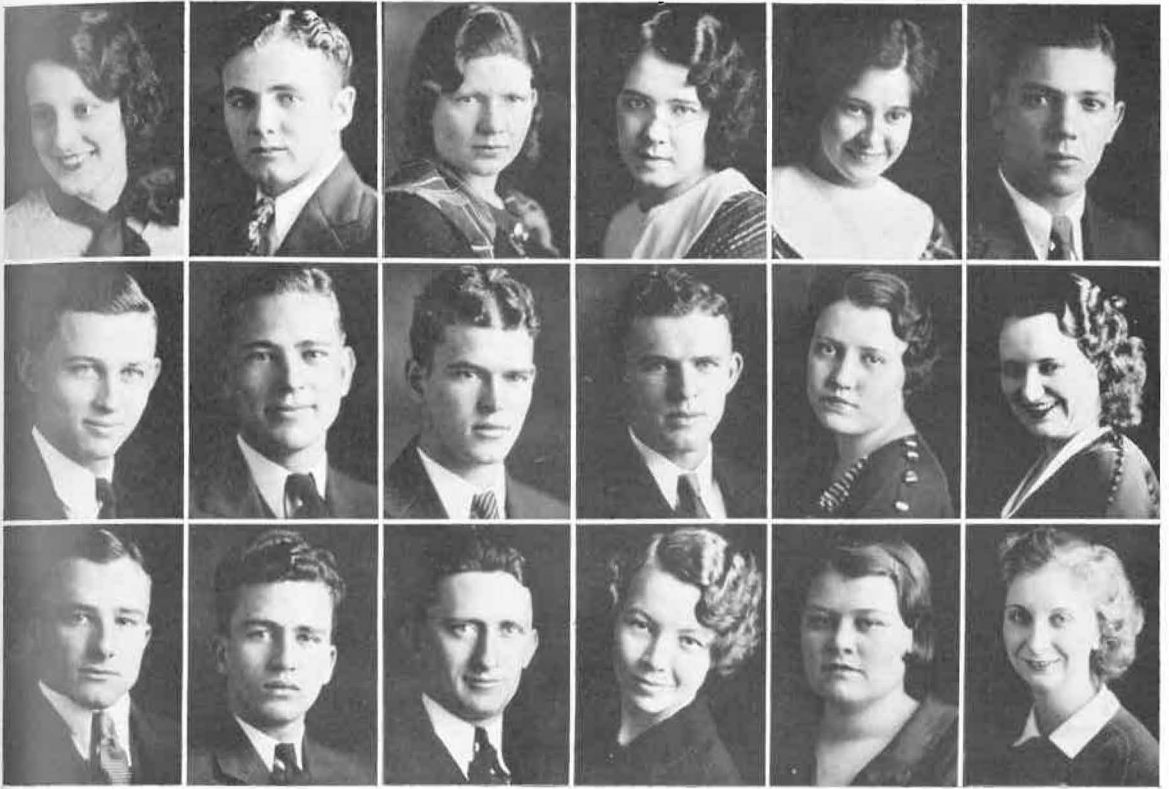
MARTIN, EMIL *Martinville*
Agri Club.

MARTIN, LEMOYNE *Pottsville*
"T" Association, Football '31, '32, Track '32, '33, Basketball '32, '33.

MATTHEWS, MARGARET *Atkins*
Home Ec. Club.

MAXWELL, JOE *Kingston*
Y. M. C. A., F. F. A., Agri Club.

AGRICOLA



MIMS, VIRGINIA *Little Rock*
Y. W. C. A.

MITCHELL, HOPE *Prattsville*
Y. M. C. A.

NELMS, CATHERINE *West Memphis*
L of L Club.

PICKREN, ARKIE MYRTLE *Salem*
Y. W. C. A., Drum Corps.

PIERCE, ROSAMOND *Hollister, Mo.*
Dramatic Club.

POWERS, IVAN *Malvern*
Engineers Club.

RAGLAND, ROBERT *Fort Smith*
Engineers Club, Business Manager, Tuba Agricola.

RALEY, T. A. *Lead Hill*
Agri Club, F. F. A.

RAWLINGS, RALPH *Waldron*
Engineers Club, Football '32, Track '32, "T" Association.

REEDER, CHARLES *Little Rock*
Pep Squad, Agri Club.

ROBBS, ALYCE *Pine Bluff*
Basketball '33, Dramatic Club, L of L Club.

ROBINSON, ANNA PEARL *Russellville*

ROGERS, JAMES *Dumas*

ROREX, HERBERT *Swifton*
Basketball '33, "T" Association.

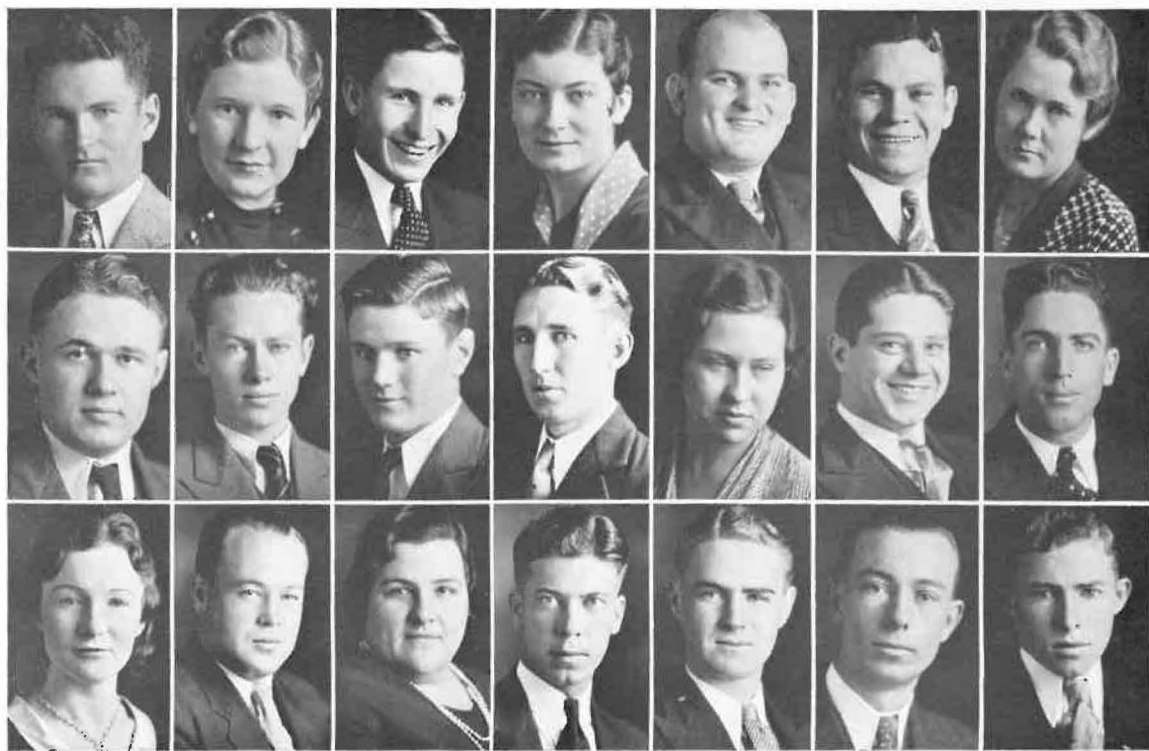
ROY, D. C. *DeWitt*
Y. M. C. A., History Club, French Club, Agricola,
Pep Squad, Bible Study Group.

ROYS, KATHRYN *Russellville*
Home Ec. Club.

RYE, NANNIE JEAN *Russellville*
Dramatic Club, French Club, Y. W. C. A.

SANDS, RUBY NELL *Russellville*

AGRICOLA



SATTERFIELD, LESTER *Abbott*
Engineers Club.

SAWYER, ALMA *Russellville*
Dramatic Club, French Club.

SIMPSON, HARRELL *Cave City*
President, Sophomore Class, History Club, French Club, Agricola.

SMITH, LORENE *Pottsville*
Glee Club.

SPENCER, MALCOMB *Fort Smith*
"T" Association, Football '31, '32.

STEVENS, CLEED *Jonesboro*
Football '31, '32, "T" Association.

TAYLOR, RUTH *Pottsville*
Y. W. C. A.

TAYLOR, SAM *Mansfield*
Agri Club.

TEETER, HERMAN *Russellville*
French Club, Pen & Ink, Tuba Agricolae, Track '33.

THACKER, CLAYBOURNE *Danville*
French Club, Pep Squad.

THAXTON, FRANK *Dardanelle*
Y. M. C. A.

THIELKE, HAZEL *Wynne*
Y. W. C. A., Home Ec. Club, L of L Club, Science Club, Band.

TIPTON, LEROY *Little Rock*
Yell Leader '31, Pep Squad, Glee Club, Dramatic Club.

THREET, OSCAR *Rogers*
Agri Club, F. F. A. Club.

TUCK, LUCILLE *Dover*

TURNER, WADE *Atkins*
"T" Association, Baseball '29-'31, Football '30.

USSERY, MAXINE *Dardanelle*
L of L Club, Home Ec. Club, Y. W. C. A.

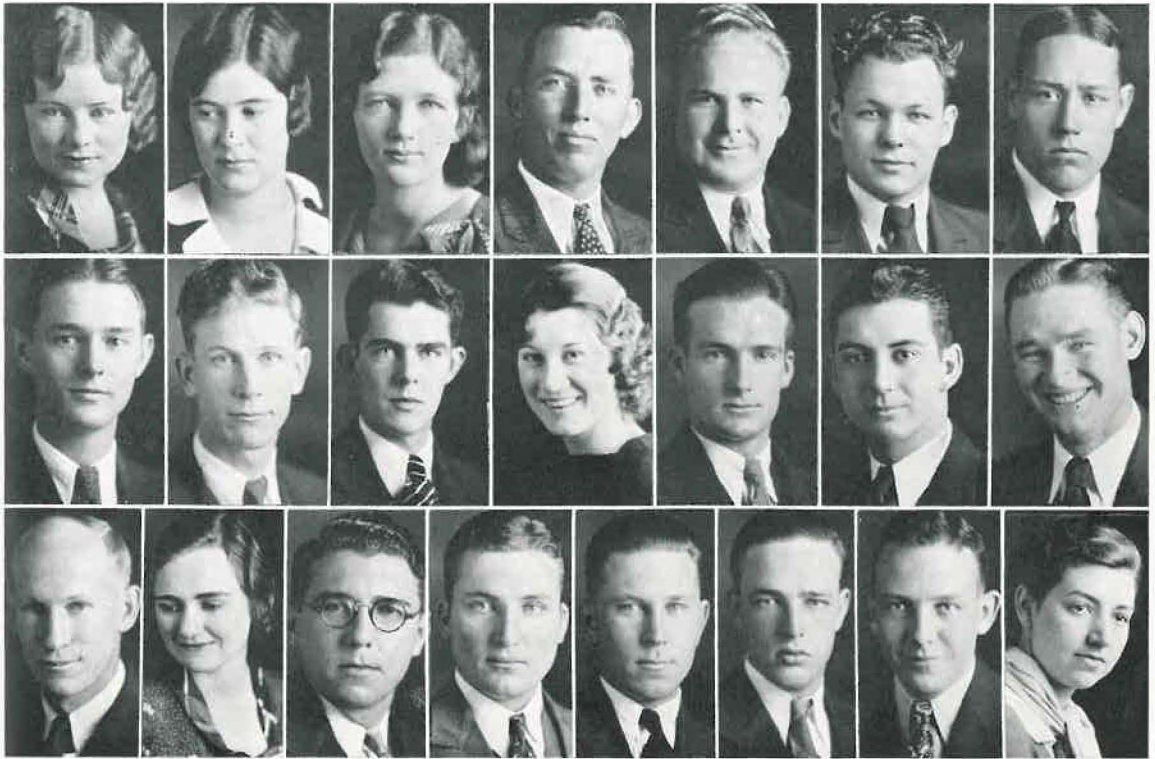
VINES, RUFUS *Paris*

VITTITOW, C. P. *DeWitt*
Engineers Club.

WAHL, NATHAN *Altheimer*
Engineers Club.

WAITS, FRANCIS *Mulberry*
Y. M. C. A., Agri Club, F. F. A., Agri Day King.

AGRICOLA



WAITS, GLYNDA *Mulberry*
Y. W. C. A., Home Ec. Club.

WALKER, CLARA *Havana*
Basketball '33, Y. W. C. A., History Club.

WOFFORD, HAZEL *Rudy*
Basketball '32, '33, Y. W. C. A., Drum Corps,
Glee Club.

WOODARD, JESSE *Danville*
F. F. A.

WOODSON, DAVID *Oklahoma City, Okla.*
"T" Association, Agricola, Dramatic Club, Football
'31, '32.

WALKER, HARLAN *Potter*
Agri Club.

WARD, BILL *Waldron*

WARREN, ORVILLE *Rosetta*

WATERFALL, UMALDY *Tulsa, Okla.*
Pen & Ink, Science Club, Band, Orchestra, Glee
Club, History Club '32.

WEATHERMAN, ROBERT *Harrison*
Engineers Club.

WEBB, ALTA MAE *Russellville*
Home Ec. Club, Basketball '32, '33, Band.

WEEDIN, ROY *Russellville*
Glee Club.

WEST, WARREN *Lavaca*
Dramatic Club, Y. M. C. A.

WESTBROOK, C. J. *Fouke*

WHITFIELD, LUTHER *Casa*

YOUNG, VERGIE *Waldron*
Home Ec. Club, L of L Club, Student Council.

WINN, ARVEY *Danville, Kentucky*

WILSON, TOM *Nimrod*
Football '31, '32, "T" Association.

WILSON, CHESTER *Greenwood*
Agri Club.

WILSON, ALBERT *Admore, Okla.*
Y. M. C. A.

WILBUR, MERRITT *Stuttgart*
Y. M. C. A., F. F. A., Agri Club.

WHITESIDE, MARIE *Morrilton*
French Club, History Club, Pen & Ink Club.

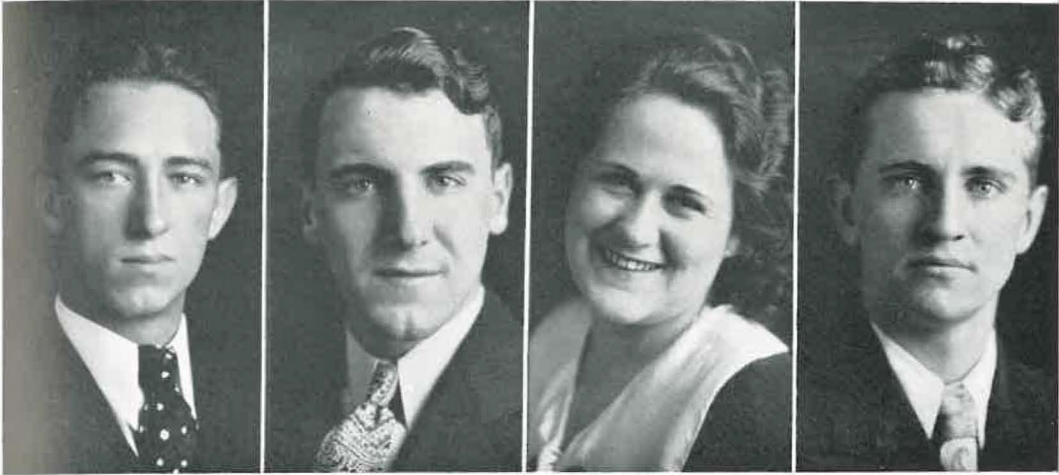
In Memoriam

To Hugh Wright

whose tragic and untimely death cast a shadow of sorrow over the entire student body, this space is dedicated.

Hugh took a leading part in all school activities as well as in the classroom. He was president of the Agriculture Club and an active member of the Y. M. C. A. On the basketball court, he lived up to his ideals of fair play and sportsmanship.

During his stay at Tech, Hugh established a great host of friends who will forever hold dear their memory of him.

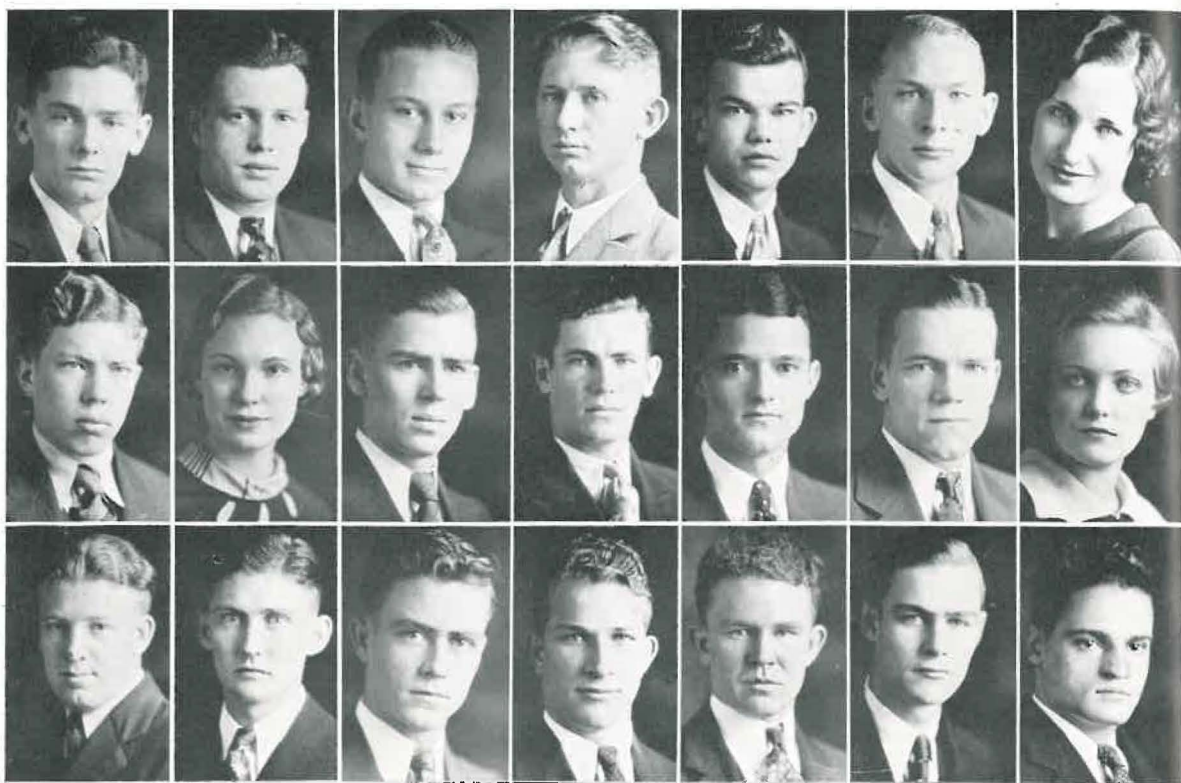


FRESHMAN CLASS

OFFICERS

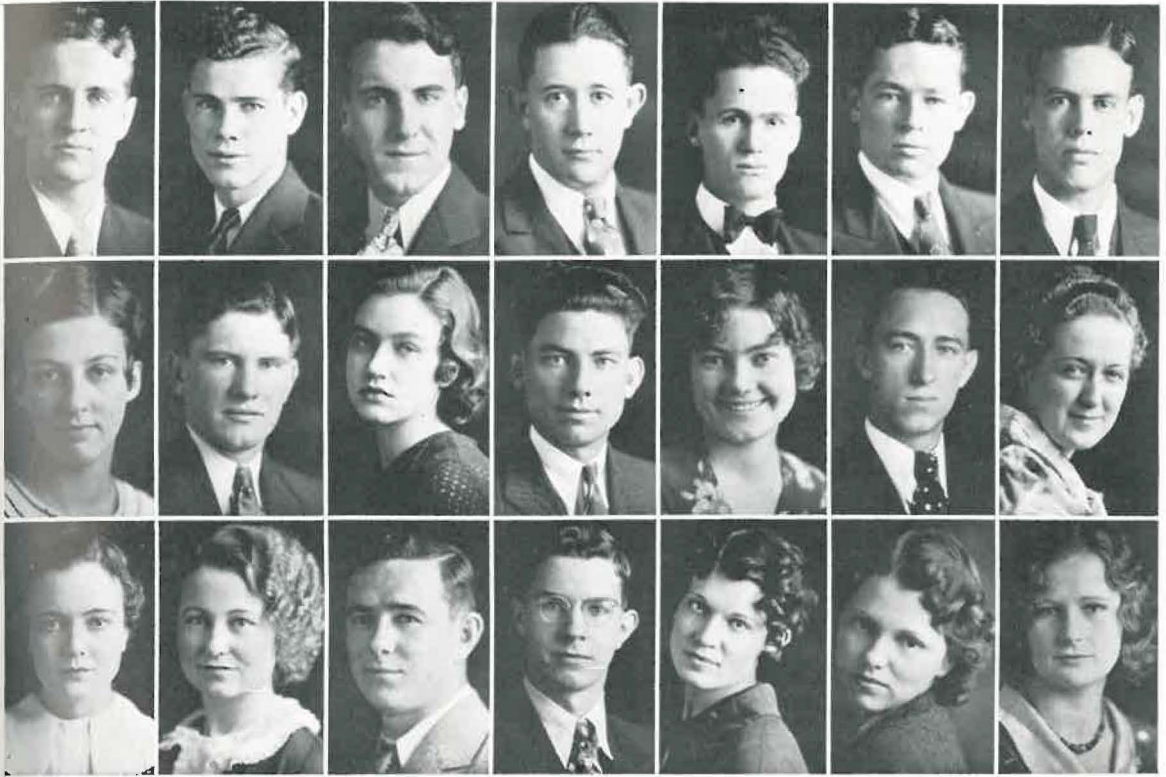
BILL CASKEY	<i>President</i>
J. W. BRYAN	<i>Vice-President</i>
BERNICE VILLINES	<i>Secretary</i>
JIMMIE BRATTON	<i>Treasurer</i>

AGRICOLA



- | | | | |
|--------------------------------|----------------------|----------------------------|---------------------|
| ADAMS, BENNETT | <i>Junction City</i> | BENSON, FRANK | <i>Stringtown</i> |
| ALLEN, E. O. | <i>Little Rock</i> | BEST, MITCHELL | <i>McCrary</i> |
| ANDERSON, JACK | <i>Russellville</i> | BEWLEY, HAZEL | <i>Hot Springs</i> |
| ATKINS, S. O. | <i>Glenwood</i> | BIDDLE, M. S. | <i>Russellville</i> |
| BAILEY, CRAIG | <i>Russellville</i> | BIRKHEAD, OTIS | <i>Paris</i> |
| BALKMAN, ALTON | <i>Paris</i> | BLAKE, WILLIAM | <i>Clarendon</i> |
| BARTLETT, EUNICE | <i>Coal Hill</i> | BOTTS, WILBUR | <i>DeWitt</i> |
| BARTLETT, THERON | <i>Russellville</i> | BLEVINS, GEORGE | <i>Roland</i> |
| BARTON, DOROTHY DEAN | <i>Atkins</i> | BRADFORD, ROBERT | <i>New Orleans</i> |
| BEARD, HAYS | <i>Wattensaw</i> | BRAGG, WOODROW | <i>New Orleans</i> |
| BELL, JOHN S. | <i>Kibler</i> | | |

AGRICOLA



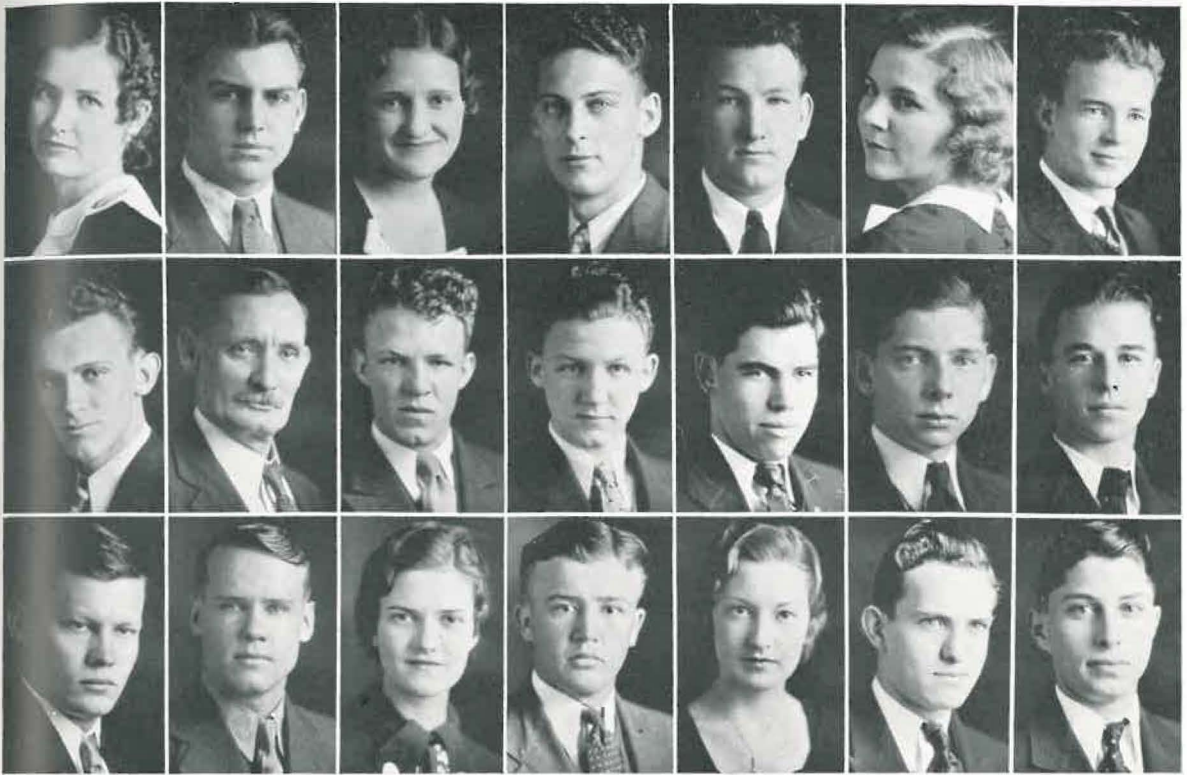
BRATTON, JAMES BERRY	<i>Marshall</i>	CANNADY, LOLA	<i>Huntsville</i>
BRAZIL, JOE	<i>Morrilton</i>	CASKEY, BILL	<i>Des Arc</i>
BRYAN, J. W.	<i>Harrison</i>	CHEEK, LUCILLE	<i>Atkins</i>
BUNCH, HUGH	<i>Kingston</i>	CHIVERS, MARGARET	<i>Russellville</i>
BURDINE, DEE	<i>Vendor</i>	CLARK, MAXINE	<i>Oklahoma City, Okla.</i>
BURNETT, ALTON	<i>Dardanelle</i>	CLEMENTS, F. B., JR.	<i>Glenwood</i>
BURGE, WOODROW	<i>Houston</i>	CLOAR, RALPH	<i>Pine Bluff</i>
CAMPBELL, FRANCES	<i>Russellville</i>	CONDY, OPAL	<i>Waldron</i>
CAMPBELL, LINDSEY	<i>Marshall</i>	CONLEY, CHARLOTTE SUE	<i>Paris</i>
CAMPBELL, LUCILLE	<i>Lead Hill</i>	CONNERLY, ANNICE	<i>Russellville</i>
CANNADY, FRANK	<i>Huntsville</i>		

AGRICOLA



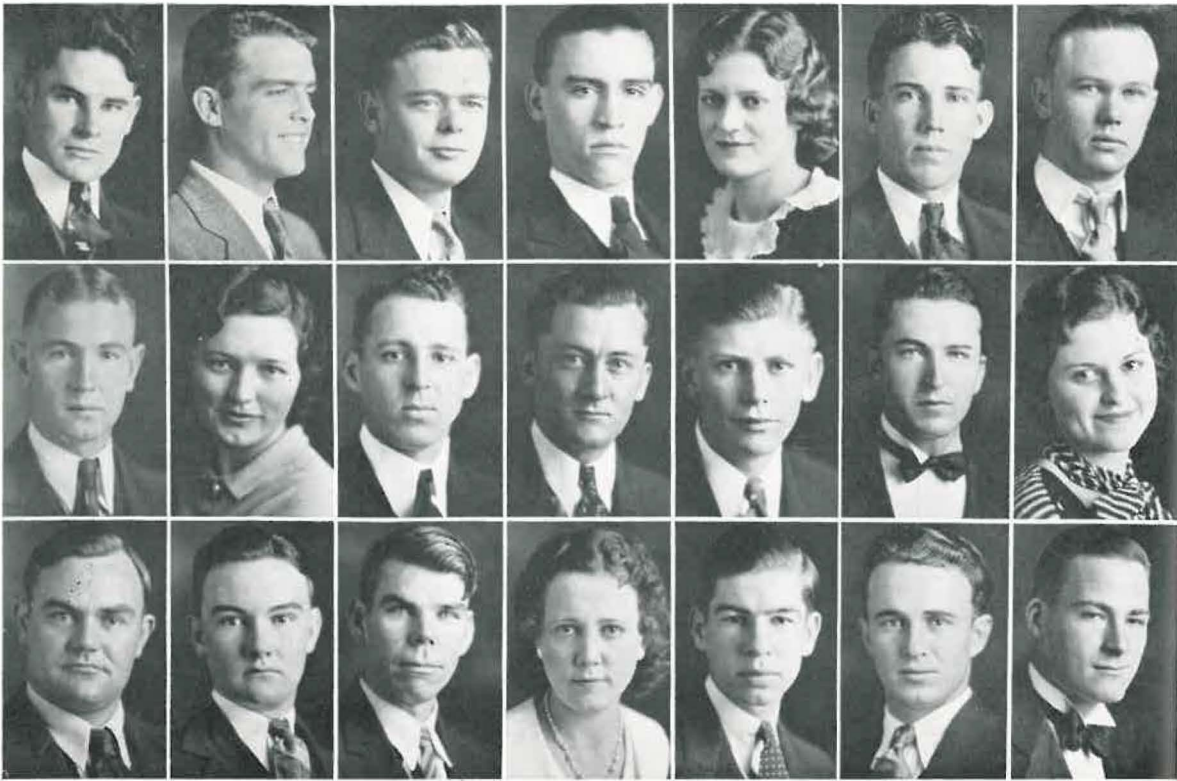
COOPER, PAUL RAY <i>Russellville</i>	DONNELL, WALDYNE <i>Van Buren</i>
COX, IMOGENE <i>Harrison</i>	DOUTHIT, ECIL <i>Magazine</i>
CRAVENS, EULA <i>Scranton</i>	DOZIER, RITA DEANE <i>Waldron</i>
CROSLY, IONE <i>Fort Smith</i>	DOUGAL, JOHN N. <i>Strong</i>
CRUMLEY, CLYDE <i>Cave City</i>	DUNN, ROY H. <i>Dardanelle</i>
DANTE, OTIS <i>Foreman</i>	EDGE, NEELIE <i>Russellville</i>
DARR, VIRGINIA LEE <i>Atkins</i>	EDWARDS, JOHN <i>Russellville</i>
DAVIS, ERNEST <i>Berryville</i>	EDWARDS, THOMAS <i>Lavaca</i>
DAWSON THURMAN <i>London</i>	EIDSON, ELSIE REE <i>Centerville</i>
DEASON, JEWELL <i>Oneida</i>	ELAM, BROWN <i>Everton</i>
DENTON, LEE <i>Russellville</i>	

AGRICOLA



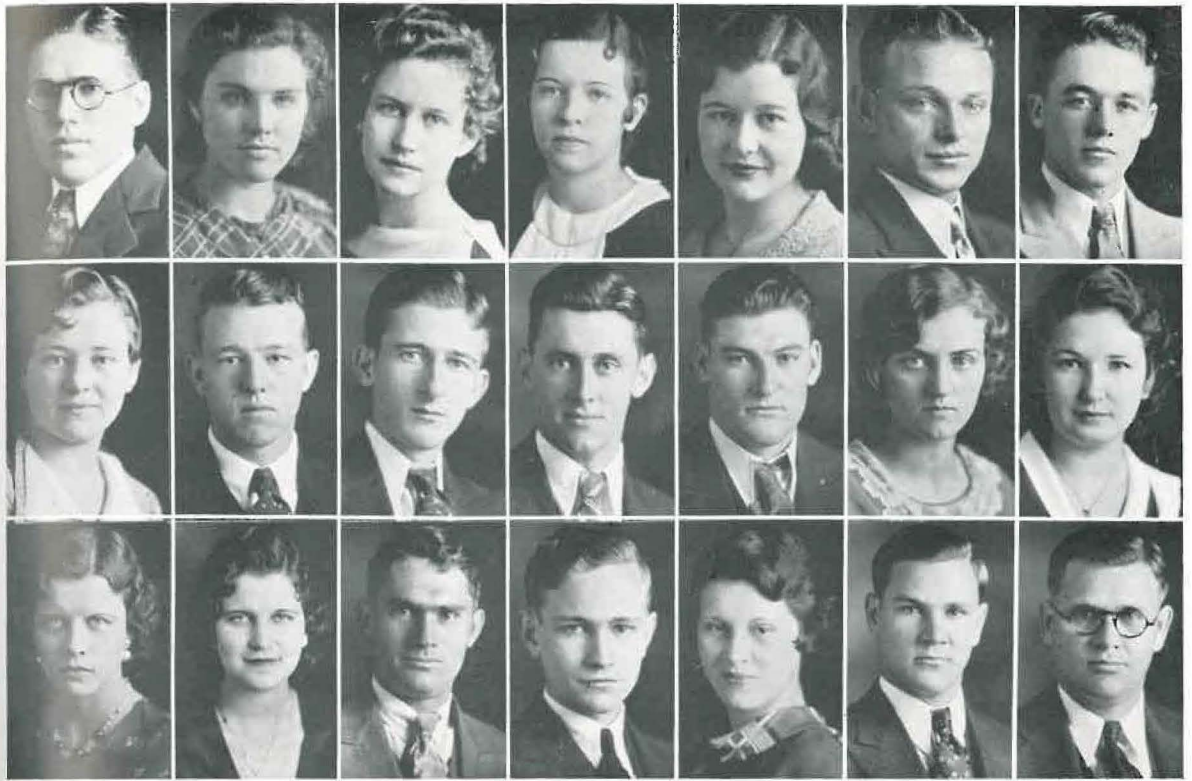
- | | | | |
|-------------------------------|---------------------|-------------------------------|----------------------|
| ELLENBROOK, GEORGIA | <i>Hot Springs</i> | FORREST, MARK | <i>Mulberry</i> |
| EPPERSON, WENDELL | <i>Amity</i> | FORTENBERRY, ROBERT | <i>Smithville</i> |
| ERMAN, CLYDE | <i>Charleston</i> | FREE, BILLY | <i>Gould</i> |
| ERWIN, RALPH | <i>Little Rock</i> | FULTON, MURRAY | <i>Dardanelle</i> |
| EVERRIGHT, ROBERT | <i>New Edinburg</i> | GATELY, HAROLD | <i>Danville</i> |
| EWING, MABEL | <i>Van Buren</i> | GIBBONS, KATHLEEN | <i>Ozark</i> |
| FALLS, WILSON | <i>Russellville</i> | GIBSON, JAMES | <i>London</i> |
| FAUST, GEORGE H. | <i>Russellville</i> | GILL, EVELYN | <i>Paris</i> |
| FAUST, IRA B. | <i>Russellville</i> | GLASS, DUDLEY | <i>Dallas, Texas</i> |
| FINLEY, JOE | <i>Russellville</i> | GLOVER, REID | <i>Ozark</i> |
| FINLEY, ROBERT | <i>Russellville</i> | | |

AGRICOLA



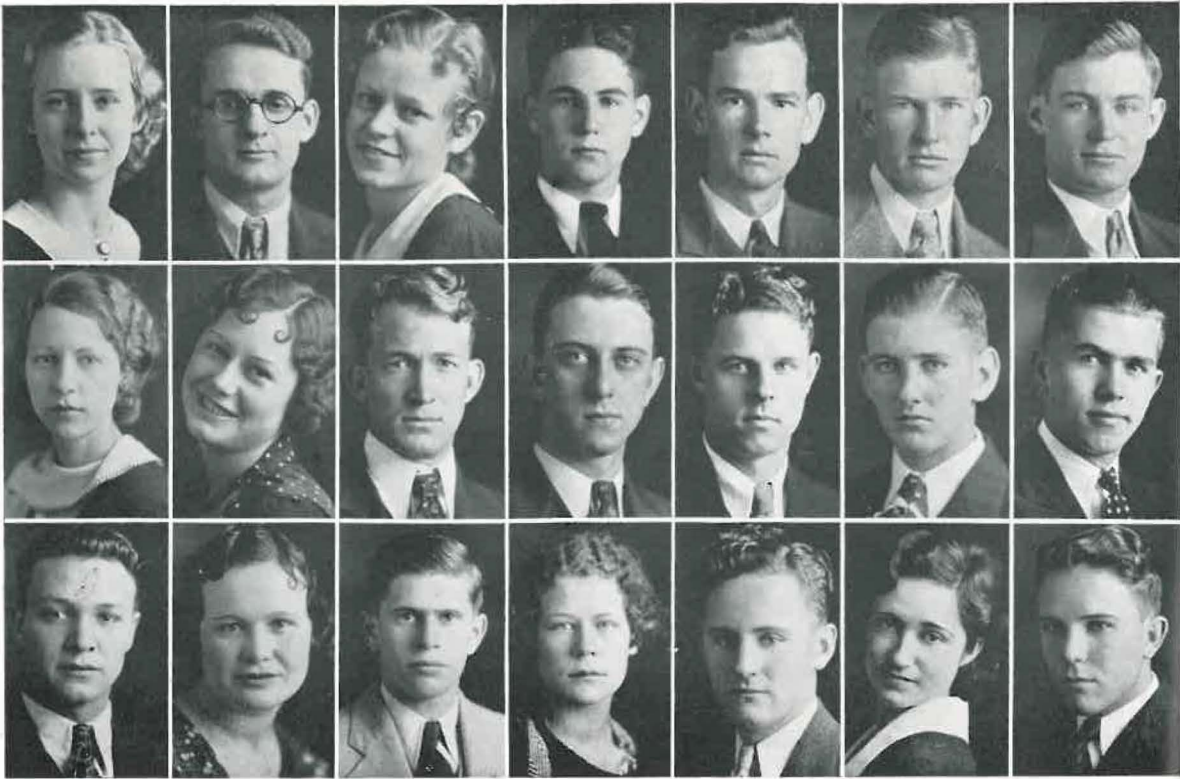
GODFREY, HOWARD F. Booneville	HARDGRAVES, LOYD H. Denning
GORDON, CHARLES Roseland	HARLAN, MARION DeWitt
GOSNELL, HENRY Ozark	HARRIS, ADELE Perry
GRACE, A. B. Belleville	HARRIS, HERCEL Dardanelle
GRACE, CLYNELL Dardanelle	HART, JAMES WILBUR Norman
GREEN, LOY Lead Hill	HATCHETT, IRWIN WEBSTER . . . Clinton
GREGORY, ELMER Alma	HAWKINS, MISSIE Waldron
GUISE, E. J. Magazine	HAYDEL, V. J. Helena
GURLEY, EULA JANE Fort Smith	HAYS, WILLIAM Charleston
HALL, OATHER Ash Flat	HEDDEN, CHARLES Shelbyville, Ky.
HALSEY, EDWARD M. Greenbrier	

AGRICOLA



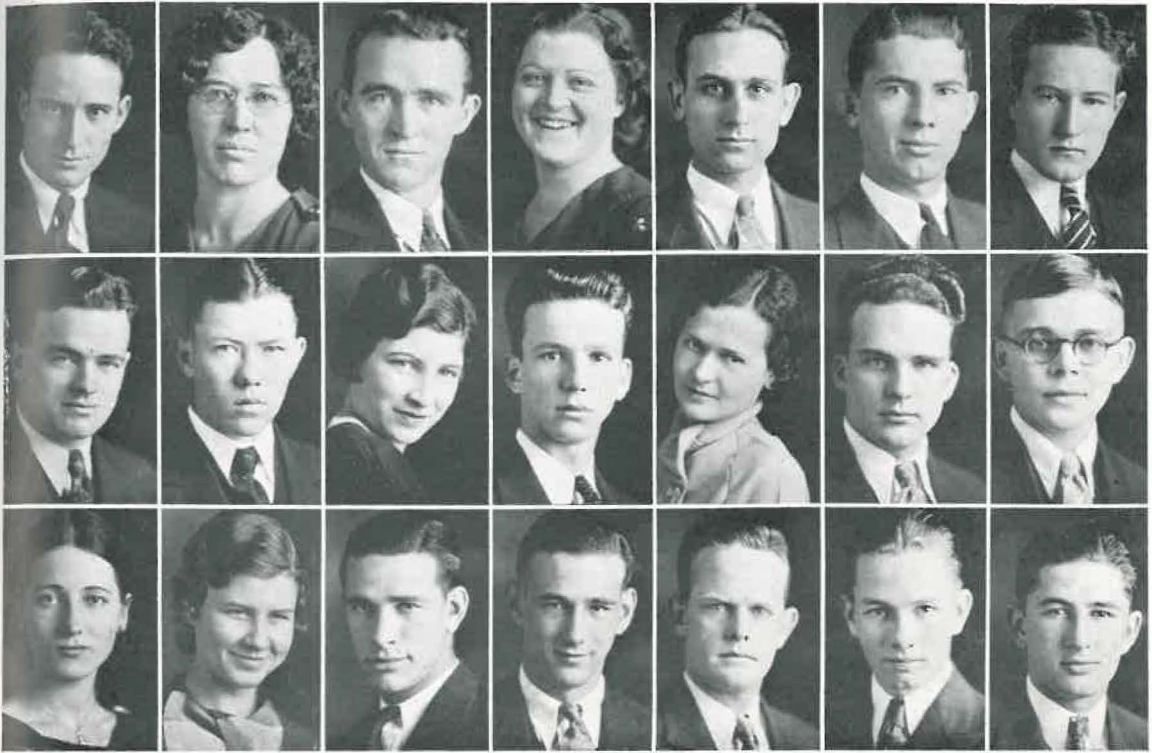
HEFNER, CECIL Danville	HUTCHENS, DILFORD . . . Mountainburg
HENRY, CLEO Russellville	HUTCHINSON, VERN Belleville
HENRY, JOHNNIE Russellville	JACKMAN, MARY ELLEN Alix
HENRY, LORA BETH Russellville	JACOBS, RUBY Russellville
HILL, NEVA Russellville	JACOBS, RUTH Russellville
HOGIN, ERNEST Lavaca	JAMES, GARLAND Yellville
HOLLABAUGH, MARCUS Marshall	JEETER, MAX Norman
HOLT, INEZ Bentonville	JEWEL, WENONAH Paris
HOPKINS, ESTEL Alix	JOHNSON, DALLAS Dover
HOUSER, BILL DEAN Paris	JOHNSON, WAYNE Dover
HUDSON, LEE Berryville	

AGRICOLA



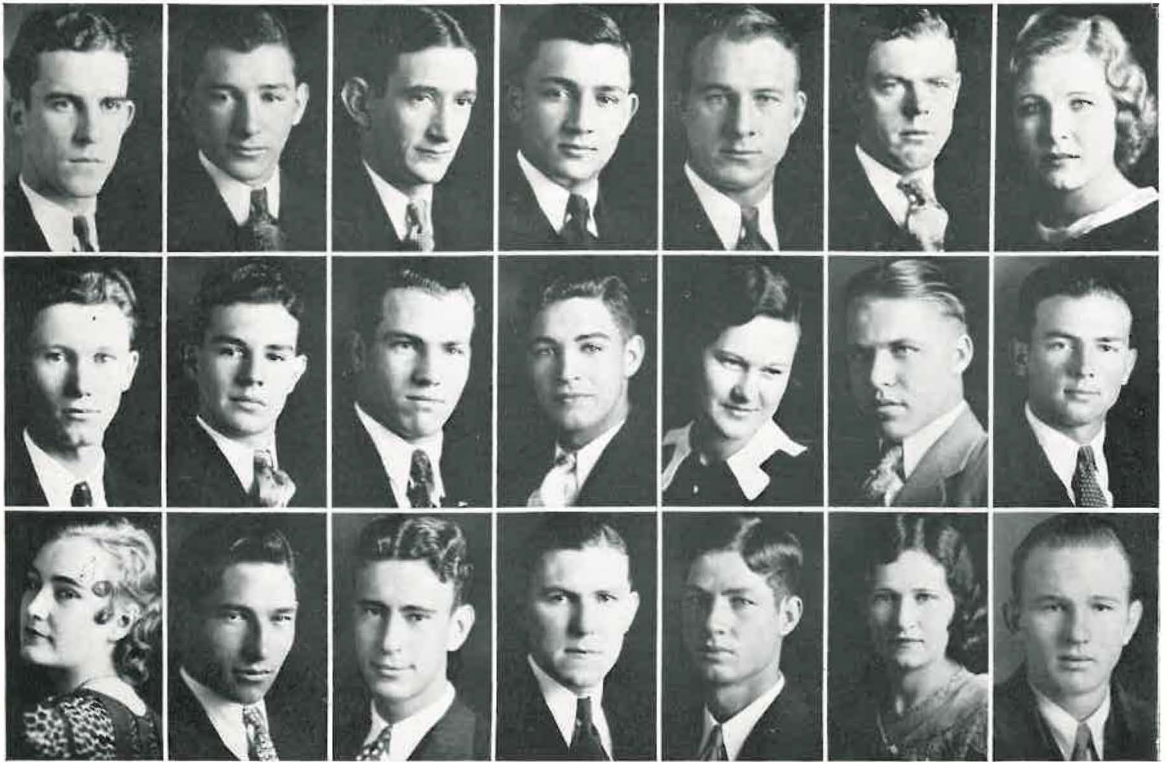
JONES, EULINE	<i>Dardanelle</i>	LANDERS, HERMAN ESPIE .	<i>New Edinburg</i>
JUNKIN, PRESLEY	<i>Little Rock</i>	LAUGHLIN, CHARLES DENNIS .	<i>Hot Springs</i>
JUSTICE, MURIEL	<i>Russellville</i>	LEGGETT, FRED	<i>Little Rock</i>
KEATHLEY, BOBBY	<i>Danville</i>	LEWIS, JACK	<i>Alma</i>
KIERSEY, ALEX	<i>Hot Springs</i>	LEWIS, LOUISE	<i>Havana</i>
KIDD, HOWARD	<i>Murfreesboro</i>	LOCKE, ROYCE	<i>Pine Bluff</i>
KINGSLEY, EARL	<i>Scotland</i>	LOVE, ANNA LOUISE	<i>Dardanelle</i>
KNIGHT, SUE	<i>Malvern</i>	LOWERY, TOM	<i>Ashdown</i>
KUMPE, ZELMA	<i>Little Rock</i>	LUNN, EDITH	<i>Mammoth Springs</i>
LADD, LOYD	<i>Belleville</i>	MCBRIDE, GLEN	<i>Briggsville</i>

AGRICOLA



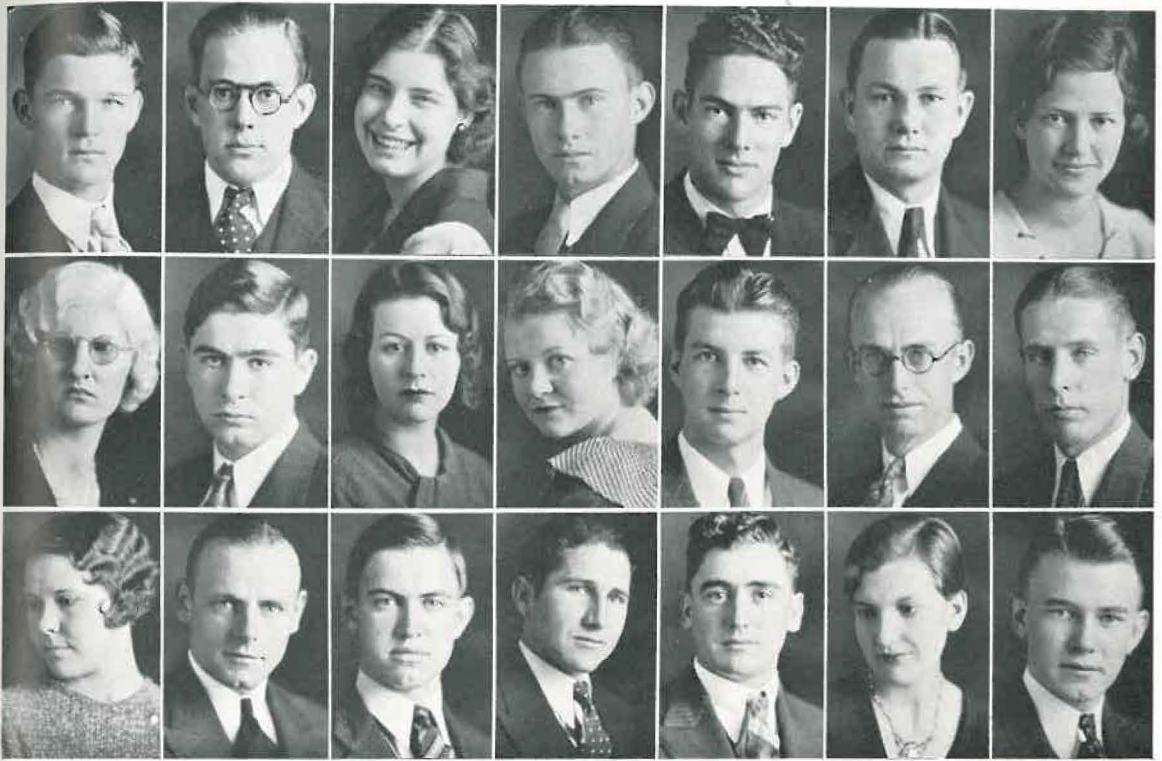
McDERMOTT, MILES Conway	MERRITT, EVA LENA Stephens
McILROY, BONNIE Cass	MORRIS, FLOYD Harrison
McILROY, JIM Cass	MOUDY, RAY Belleville
McILROY, MARTHA Cass	MULLINS, MARIE Gum Log
McKIMMEY, MARK L. Eureka Springs	NELSON, MARY LUCILLE McCrory
McLEOD, ALTON Imboden	NICKLES, CHARLES Stuttgart
MARTIN, EUGENE Mountain Home	NORTHEN, WILL Little Rock
MARTIN, REX Springfield, Mo.	OAKES, JACK Augusta
MARTIN, ROY C. Magazine	PATTON, ANDREW Canfield
MATLOCK, MARY ANN Fouke	PECK, PAUL Imboden

AGRICOLA



PETTY, WOODROW	<i>Paris</i>	REID, JAMES T.	<i>Vian, Okla.</i>
PETTYJOHN, EARL	<i>Imboden</i>	REINHARDT, ANNA LENA .	<i>Hickory Plains</i>
PETTYJOHN, ELMO	<i>Imboden</i>	RENNEKER, EUGENE	<i>Clarendon</i>
PETTYJOHN, ROBERT	<i>Hoxie</i>	RESIMONT, STANLEY	<i>Altus</i>
PHILLIPS, COY	<i>Jacksonville</i>	REYNOLDS, GERALDINE	<i>Russellville</i>
PIERSON, DOYLE	<i>Ozark</i>	RIGGS, CARLEE	<i>Russellville</i>
PRICE, MARGARET	<i>Little Rock</i>	RILEY, JAMES	<i>Little Rock</i>
PRITCHETT, HADDON	<i>Lavaca</i>	ROBINSON, HARRY	<i>Deadwood, S. D.</i>
RAY, JAMES	<i>Lincoln</i>	ROBINSON, GRADY	<i>Greenwood</i>
REED, ALMA	<i>Booneville</i>	RYE, JESSIE	<i>Lamar</i>
		SANDLIN, DALE	<i>Strait, Okla.</i>

AGRICOLA



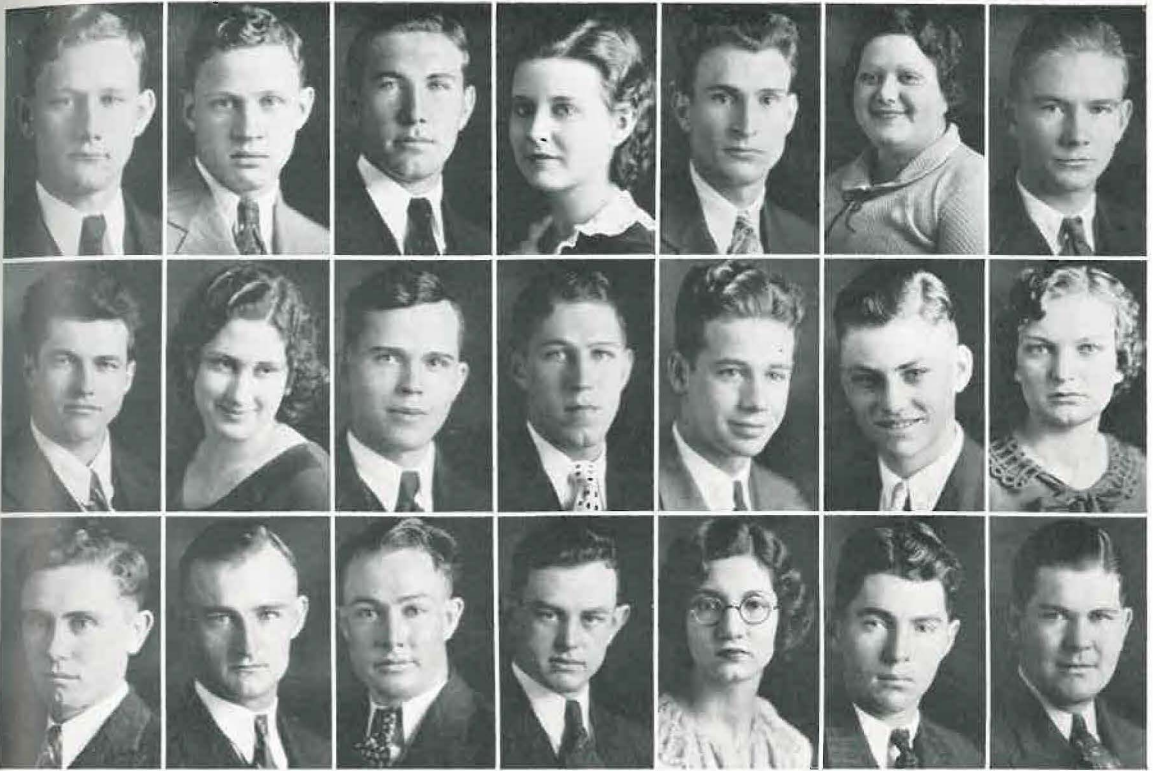
- | | | | |
|--------------------------------|---------------------|--------------------------------|---------------------|
| SATTERFIELD, GLENDEL | <i>Russellville</i> | SINGLETON, GRANVILLE | <i>Alma</i> |
| SCOTT, LEWIS | <i>Dardanelle</i> | SLAGLE, AUDA | <i>Everton</i> |
| SCOTT, OPHELIA | <i>Dardanelle</i> | SMITH, CLIFFORD | <i>Fouke</i> |
| SEVERE, MIKE O. | <i>Magazine</i> | SMITH, GETA | <i>Melbourne</i> |
| SHADDOX, HUGH | <i>Harrison</i> | SMITH, VOL | <i>Gentry</i> |
| SHADDOX, JAMES T. | <i>Jasper</i> | SPAINHOUR, WAYNNE | <i>Lamar</i> |
| SHINN, NAOMI | <i>Russellville</i> | SPICER, AMOS | <i>Alix</i> |
| SHOPTAW, CLAUDINE | <i>Dover</i> | STAFFORD, CLYDE | <i>Norman</i> |
| SHULLER, THURMAN | <i>Ozark</i> | STEVENSON, VIOLA | <i>Russellville</i> |
| SIMPSON, ELSIE | <i>Hot Springs</i> | STEWART, JOHN HAROLD | <i>Clarksville</i> |
| SIMS, ELIZABETH | <i>Hot Springs</i> | | |

AGRICOLA



- | | | | |
|-----------------------------------|-----------------------|------------------------------|--------------------------|
| STRICKLAND, DORA MYRTLE | <i>Russellville</i> | TIPPETT, LODA | <i>Bergman</i> |
| STUBBLEFIELD, KIRKMAN | <i>Evergreen, La.</i> | TOMLINSON, JAMES W. | <i>Kansas City, Kan.</i> |
| STUTTS, BERNICE | <i>Hector</i> | TORBETT, CHESTER | <i>Belleville</i> |
| SUGG, LETHA | <i>Belleville</i> | TREECE, HUGH | <i>Marshall</i> |
| TALLEY, EULA | <i>Russellville</i> | TURNER, MARTHA SUE | <i>Atkins</i> |
| TAYLOR, ALMA | <i>Bass</i> | TURNER, MARY SUE | <i>Dover</i> |
| TAYLOR, ROY | <i>Gentry</i> | TURRENTINE, BUNNY | <i>Russellville</i> |
| TAYLOR, RUBY NELL | <i>Belleville</i> | VILLINES, BERNICE | <i>Harrison</i> |
| TEETER, ERNEST | <i>Pottsville</i> | WALDON, GENE | <i>Ozark</i> |
| TEETER, MARTHA | <i>Pottsville</i> | WALLACE, MILFORD | <i>Harrison</i> |
| TEETER, MARY NELL | <i>Pottsville</i> | WALKER, JOHN ED. | <i>Harrison</i> |
| TINDALL, SUE | <i>Van Buren</i> | | |

AGRICOLA



WATSON, WILBUR *Danville*
 WEBB, LEWIS *Hector*
 WEBB, MITCHELL *Lamar*
 WEST, MARY ELIZABETH *Lavaca*
 WHITE, ELMER *Norman*
 WHITE, VELVA *Belleville*
 WHITEHEAD, ROBERT *DeWitt*
 WIDMER, RUSSELL *Van Buren*
 WILHITE, NELLIE *Houston*
 WILLIAMS, HUBERT *Casa*
 WILLIAMS, ROBERT HAYS *Danville*

WILLIAMSON, PAUL *Little Rock*
 WILSON, E. B., JR. *Russellville*
 WILSON, GENE *London*
 WISER, JAMES *Blue Mountain*
 WOOD, CARROL D. *Yelleville*
 WOOD, POWELL *Perry*
 WOOD, RUFUS *Salem*
 WYSS, MARIE *Russellville*
 YOUNG, J. A. *Dover*
 ZIMMERMAN, GLENN *Little Rock*





F E A T U R E S

ARKANSAS POLYTECHNIC COLLEGE

THE BOLL  WEEVIL



Mary Catherine Bayliss

Arkansas Polytechnic College



Clynell Grace



Mary Ruth Darr



Mary Elizabeth West



Kathleen Gibbons



Martha Sue Turner



DOROTHY FOUNTAIN
MOST POPULAR GIRL



MILTON GARDNER
BEST ALL-ROUND BOY



BILL BUNCH
BEST ATHLETE



CLARA WALKER
BEST ALL-ROUND GIRL

Who's Who



GEORGIA ELLENBROOK
POPULARITY



HOWARD GODFRAY
ACTIVITIES



EULETA GIBSON
ACTIVITIES



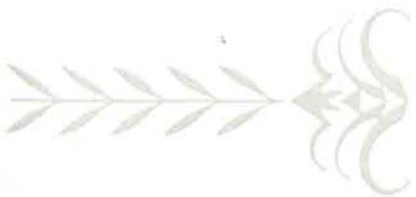
LE MOYNE MARTIN
ATHLETICS



GORDON MCCARTY
PUBLICATIONS



ARNOLD HENRY
SCHOLARSHIP



Who's Who





MARKY BEST
Publications



RALPH RAWLINGS
Activities



WAYNE JOHNSON
Scholarships



HARRELL SIMPSON
Leadership



LOVIS MCCORKLE
Athletics



RUBY MARY BREEDLOVE
Scholarships

Who's Who



GOVERNOR GUEST AT AGRI DAY

BY HOWARD KIDD

The annual Agri-Home Ec Day was celebrated May 4. Mud, water, and sleepy Agri and Engineer boys were all over the campus.

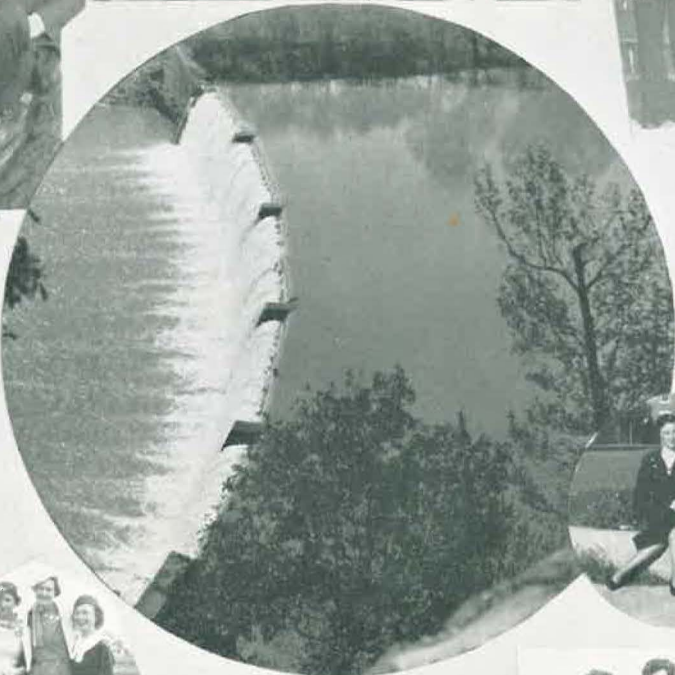
Governor Futrell was the main speaker of the day. He praised the work of the four state agricultural institutions and said they were rendering at a nominal expense a great service for the youth of this state. He also praised President Hull for operating the institution on such an economical basis.

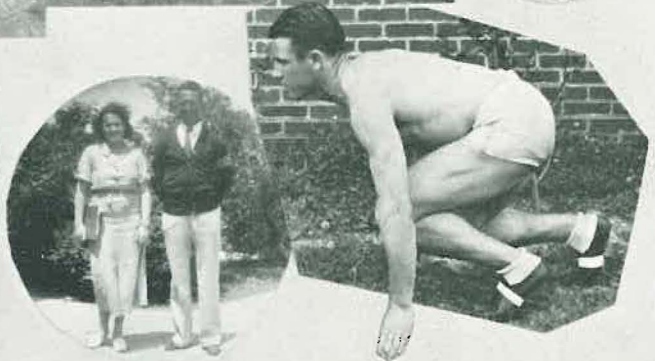
Then there were the floats. They were beautiful and represented departments, clubs, and Russellville business firms. But the rain—such luck for so much time in preparing the floats to be largely wasted.

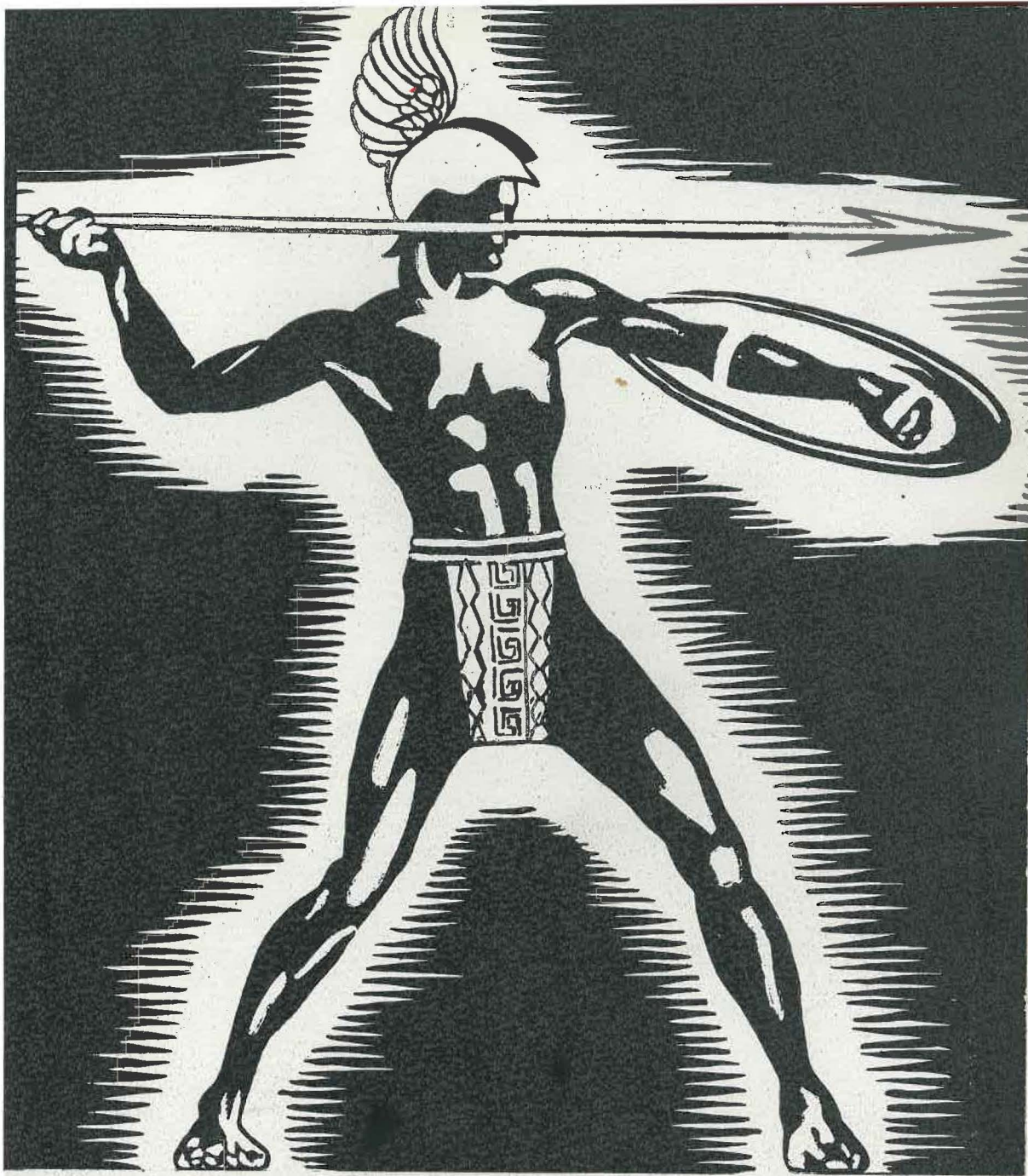
The coronation of the King, Francis Waits, and the Queen, Fannie Rhea Cheek, was very impressive. They were attended by two maids, Letha Sugg and Eula Cravens, and two attendants, Othel Fullen and Hays Beard. A May Pole dance preceded the crowning of the King and Queen.

The baseball game, Arkansas Tech versus State Teachers, was postponed because of bad weather conditions. The banquet for the Agri boys and Home Ec girls was a grand success. Everyone who was present said that a little rain would never keep him away from a feast like the one that night. The Agri and Home Ec clubs also sponsored a student dance, which despite the rain and mud was one of the best dances of the year.

Agri-Home Ec Day







ATHLETICS

TECH'S BELOVED COACH

BY DAVID WOODSON

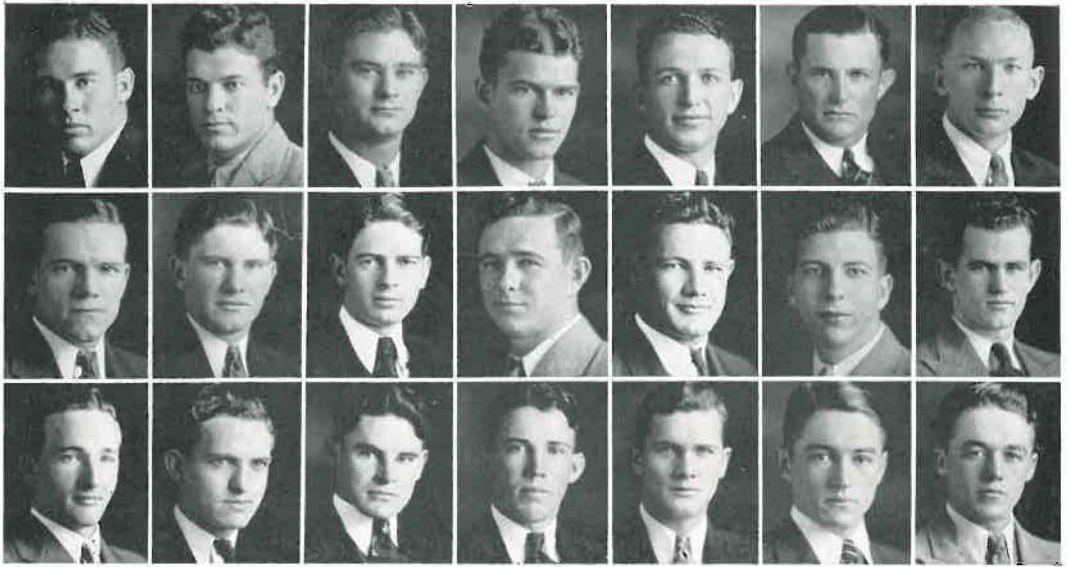
Coach E. O. "Silent" Brown has coached athletics at Arkansas Polytechnic College for the past thirteen years. He has made many great athletic teams and produced many outstanding men during his career here.

Coach Brown's retirement is deeply regretted by many members of his past teams. They wish him the greatest of success in whatever field he may venture. His untiring efforts and interest in the men he has coached has instilled in them a deep devotion to him. In due respect to the retiring coach we run a record of the achievements of football teams under his past direction and guidance. It suffices to say that he has established a record for coaching in Arkansas that will stand for many years.



COACH E. O. BROWN

Year	Won	Lost	Tech Points	Opp. Points
1920	4	0	128	13
1921	7	0	270	7
1922	8	1 (Tulsa)	322	14
1923	7	1 (Army)	180	57
1924	7	1 (Texas A. and M.)	137	73
1925	7	2	167	37
1926	7	2	157	31
1927	5	3 (1 tie)	72	64
1928	7	2	200	74
1929	4	3 (1 tie)	125	59
1930	4	2 (2 tie)	57	27
1931	7	1 (1 tie)	252	32
1932	5	2 (1 tie)	133	33
	<hr/>	<hr/>	<hr/>	<hr/>
	79	20 6	2200	531



Burch
Best
Gibson

Martin
Campbell
Glass

Jeffries
Cato
Godfrey

Rawlings
Clement
Green

Churchill
Criswell
Halsey

Tucker
Edwards
Hawthorne

Balkman
Gardner
Hollabaugh

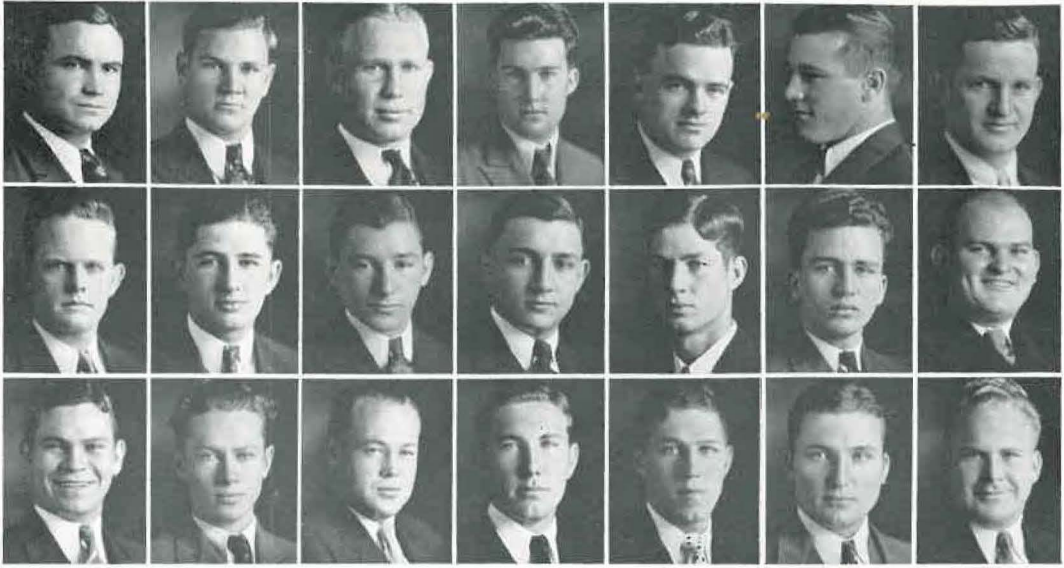
"T" ASSOCIATION

OFFICERS FIRST SEMESTER

CURTIS HENDERSON *President*
 BID JEFFRIES *Vice-President*
 JERRY CHURCHILL *Secretary*

OFFICERS SECOND SEMESTER

ARTHUR BURCH *President*
 LEMOYNE MARTIN *Vice-President*
 RALPH RAWLINGS *Secretary*



Horne
Oakes
Stephens

Johnson
Peck
Teeter

Langley
Pettyjohn
Turner

Lewis
Pettyjohn
Webb

Martin
Robinson
Williams

McCorkle
Rorex
Wilson

McMindes
Spencer
Woodson

"T" ASSOCIATION

Football

MITCHELL BEST
ARTHUR BURCH
JERRY CHURCHILL
OLIVER CRISWELL
ELLIS GARDNER
CURTIS HENDERSON
HARLIE HORNE
BID JEFFRIES
TIGE LANGLEY
LEMOYNE MARTIN
REX MARTIN
LEWIS McCORKLE
RALPH RAWLINGS
MICKEY SPENCER

CLEED STEPHENS
JOHN TUCKER
WADE TURNER
MITCHELL WEBB
TOM WILSON

Basketball

ALTON BALKMAN
ARTHUR BURCH
LINDSEY CAMPBELL
JERRY CHURCHILL
ROY GREEN
EARL HALSEY
LEMOYNE MARTIN
CALVIN McMINDES
PAUL PECK

EARL PETTYJOHN
ROBERT PETTYJOHN
GRADY ROBINSON
HERBERT ROREX

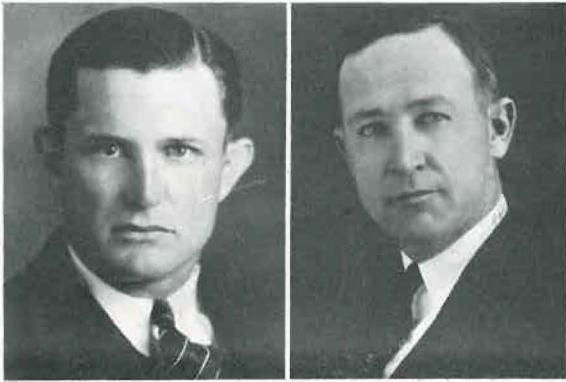
Track

ARTHUR BURCH
F. B. CLEMENT
JOHN EDWARDS
DUDLEY GLASS
HOWARD GODFREY
WOODROW HAWTHORNE
BROWN LEWIS
LEMOYNE MARTIN
LEWIS McCORKLE
RALPH RAWLINGS

HERMAN TEETER

Baseball

MITCHELL BEST
LINDSEY CAMPBELL
JACK CATO
JAMES DYER GIBSON
MARCUS HOLLABAUGH
HARLIE HORNE
DALLAS JOHNSON
BROWN LEWIS
JACK OAKES
ROBERT PETTYJOHN
GRADY ROBINSON
WADE TURNER
ROBERT HAYS WILLIAMS



John Tucker

Bill Cowan

FOOTBALL

For the coming football season we have as our head coach one of our outstanding ex-students, John E. Tucker, who fought many battles along with Wonder Boys of the years past, and played a large part in helping our retiring Coach Brown in establishing his fine record. After finishing Tech Tucker entered Alabama University and was a potent factor in two of the famous Alabama teams under the direction of Coach Wallace Wade of that institution. We trust that no better selection of a young coach to succeed Coach Brown could have been made and we join all in wishing Mr. Tucker much success with our future Wonder Boy teams.

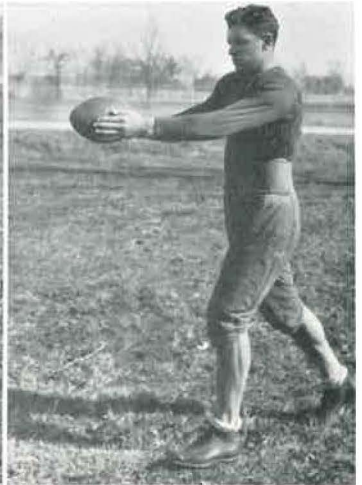
Coach Cowan has labored untiringly for several years with our Wonder Boy teams and we feel that his effort has not been in vain. We are looking forward to his help in giving Tech greater days on the football gridiron.



Captain Oliver Criswell
All-State Tackle



Captain-Elect Bid Jeffries
All-State Halfback



Sub-Captain-Elect "Dub" Martin
All-State Fullback

1932 SEASON

OCTOBER 7

Tech	93	Arkansas College	0
Tech	6	Beebe Aggies	0

OCTOBER 14

Tech	7	Hendrix	6
------	---	---------	---

OCTOBER 21

Tech	0	Magnolia A. and M.	7
------	---	--------------------	---

OCTOBER 28

Tech	0	Henderson State	7
------	---	-----------------	---

NOVEMBER 4

Tech	26	State Teachers	0
------	----	----------------	---

NOVEMBER 11

Tech	0	Ouachita	0
------	---	----------	---

NOVEMBER 18

Tech	13	Monticello A. and M.	7
------	----	----------------------	---

NOVEMBER 25

Tech	20	College of Ozarks	6
------	----	-------------------	---



TOM WILSON, *Sub-Capt.-Elect* . Center
 BILL BURCH, *All-State* . . . Halfback
 HARLIE HORNE . . . Halfback





TECH 93, ARKANSAS COLLEGE 0

TECH SECONDS 6, BEEBE AGGIES 0

The football season opened auspiciously. The second team played and won a tough struggle from Beebe Aggies. A short pass, Williams to Rawlings, and a spectacular 60-yard run by the latter counted the single tally for the Wonder Boys.

The Varsity opened the season by running rough-shod over Arkansas College. This game was a spectacular show of ability in all phases of football,—running, passing, blocking, and line plunging. The outstanding backfield aces were Burch, McCorkle, Martin, and Criswell. The line showed rugged ability in blocking all plays and clearing away opposition for running plays. Stephens, the outstanding star for the line, made two touchdowns from his wing position.

TECH 7, HENDRIX 6

Tech fought the Hendrix Warriors to a standstill all during the first quarter, neither team

CLEED STEPHENS *End*
 DAVE WOODSON *Tackle*
 JERRY CHURCHILL *End*



showing up the stronger. "Bid" Jeffries started the second quarter off with a bang by slipping through the opponents to make the first touch-down. The run was one of Jeffries' specialties; he snake-hipped his way some 50 yards to cross the goal. Burch followed up the run by kicking the pigskin cleanly through the goal posts. Hendrix scored during the last quarter, giving the last minute thrill to all the spectators, but failed to kick goal. Tech received and drove to the Warrior's 20-yard line when the game ended.

TECH 0, MAGNOLIA 7

Ineligibilities were blamed partially for the unfortunate loss of the game with the Magnolia Muleriders. McCorkle, star halfback and one of the fastest men in Arkansas, was ineligible due to scholastic difficulties. Rex Martin and Epperson, reserve wingman and fullback respectively, were out for the same trouble. Weakened by these



MICKEY SPENCER Guard
 RALPH RAWLINGS Halfback
 ELLIS GARDNER Quarterback





MITCHELL WEBB *End*
 REX MARTIN *End*
 MITCHELL BEST . . *Halfback, End*

losses, Tech lacked the needed punch to drive over the winning touchdown. Magnolia scored early in the game on a long forward pass and had strength enough to withstand all attacks made on her goal line.

TECH 0, HENDERSON 7

A punting duel between Martin of Tech and Wells of the Henderson squad was the feature attraction of the game. During the entire game it was a struggle, powerful line battering equally powerful line. The break, a fumble which came in the third quarter, gave the Reddies the ball on Tech's ten-yard line. A double-reverse well executed gave the Henderson team the single tally of the game. Tech made a final effort but fell short in their drive to the Reddies' goal. The game was mainly a battle of two great lines, perhaps of the two greatest ever produced in Arkansas.



TECH 26, STATE TEACHERS 0

After playing a scoreless first quarter, the Techmen began to outplay the Bears and overwhelmed them for the next three periods. Tech scored four touchdowns and two extra points. Martin scored in the second quarter after Woodson covered a Teacher's fumble. Jeffries scored in the third period and McCorkle and Burch each scored once in the fourth.

It was in this game that Jeffries sustained injuries which prevented his completing the season.

TECH 0, OUACHITA 0

For the fourth consecutive time Tech and Ouachita battled to a scoreless tie on Kavanaugh Field on Armistice Day.

Tech, however, clearly outplayed the Tigers and had three opportunities to score while the Ouachita delegation never threatened. Three times Tech came within three yards of the goal but the



TIGE LANGLEY, *All-State* . . . *Guard*
CURTIS HENDERSON *Tackle*
LOUIS MCCORKLE *Halfback*





ROBERT HAYS WILLIAMS . *Quarterback*
JOHN EDWARDS *Center*
HERCEL HARRIS *Guard*

Wonder Boys failed to find the winning punch necessary to drive over.

Tech made 265 yards from scrimmage to Ouachita's 160 and 13 first downs to the Tiger's 9.

McCorkle and Burch gained more ground than any other Techmen but Lemoyne Martin was not far behind.

TECH 13, MONTICELLO 7

Scoring two touchdowns, one in the opening minute of the game, the other in the closing, the Wonder Boys defeated the Boll Weevils 13 to 7. Burch returned a punt 90 yards for a touchdown in the first quarter; the try for the extra point failed.

During the second period Monticello with three passes advanced the ball 50 yards to score. They then made the extra point and tenaciously clung to their one-point lead until the last period when Martin made a 40-yard run for a touchdown.



Martin, McCorkle, and Burch were outstanding as ball carriers, while Rawlings did some excellent blocking. Criswell, Langley, and Stephens were outstanding in the line.

TECH 20, COLLEGE OF OZARKS 6

With five Techmen playing their last game the Wonder Boys defeated the College of Ozarks Mountaineers on Turkey Day. McCorkle in the first quarter advanced the ball almost to the goal line but was injured when tackled. Martin then drove over for the touchdown. In this same quarter Burch took a punt on his own 20-yard line and returned it for a touchdown—80 yards.

In the second quarter the Mountaineers evened the count with a successfully completed pass. In the last period Tech scored two touchdowns and two extra points to defeat C. of O. and thus concluded a satisfactory season.



BILL WARD Tackle
 WENDELL EPPERSON . . . Fullback
 ALMA REED Guard

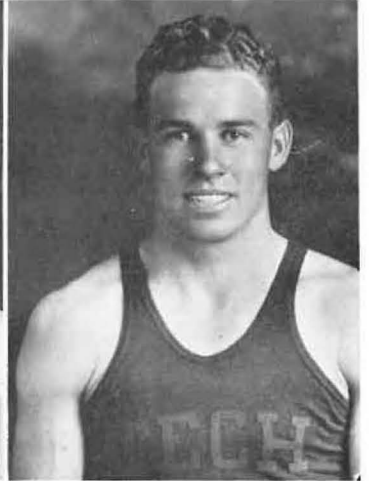




Coach E. O. Brown



Captain Calvin McMIndes

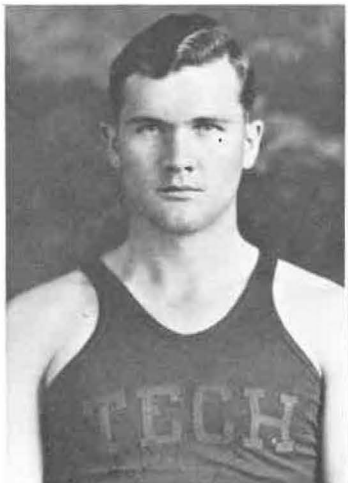


Bill Burch

BOYS' BASKETBALL

In spite of a limited schedule and only one victory, Tech placed two men on all-state teams this year. Bill Burch and Grady Robinson, both pivot men, were elected to the center position of second and third teams respectively.

Burch has been named on all-state selections before, but Robinson, a freshman, made his first debut in college athletics. Others mentioned to fill honorary posts were Captain McMIndes, "Dub" Martin, and Halsey.



Earl Halsey



Lemoyne Martin



Herbert Rorex



Grady Robinson



Loy Green



Lindsey Campbell

With a number of returning lettermen, Tech should produce one of the greatest basketball teams in the history of the school. The men returning are Green, "Red" Campbell, Robinson, Peck, Balkman, E. Pettyjohn, R. Pettyjohn, and Lemoyne Martin. These men have had enough experience in college basketball to form an efficient quintet next year.



Earl Pettyjohn



Robert Pettyjohn



Paul Peck



Alton Balkman



Coach Stanford



Webb



Wofford



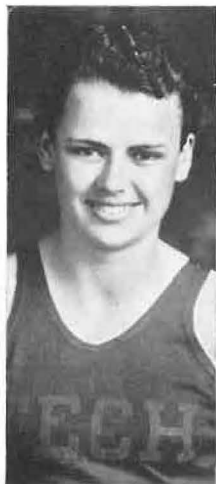
Captain Walker

GIRLS' BASKETBALL

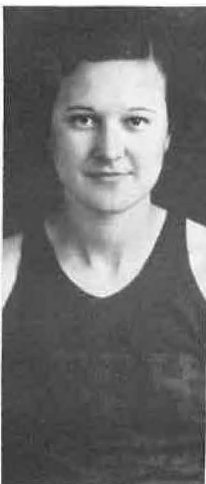
Although the girls team did not get started until late in the season and played only a limited schedule, they were recognized as one of the best sextets in the state. They lost only one game, that to the Henderson Reddiettes, and earlier in the season the Wonderettes defeated the Henderson girls. Captain Clara Walker, Anne Reinhardt, Nell Teeter, and Alta Mae Webb were outstanding but the other members of the team were almost equally as good.

The girls were coached by their new physical training director, Miss Cecil Stanford, and under her guidance much prospective material was developed to form the nucleus of the next year's Wonderettes.

With a number of this year's players returning, Tech will probably have an excellent girl's team in '33 and it is hoped that the team will be able to start play earlier in the season.



Teeter



Rainhardt



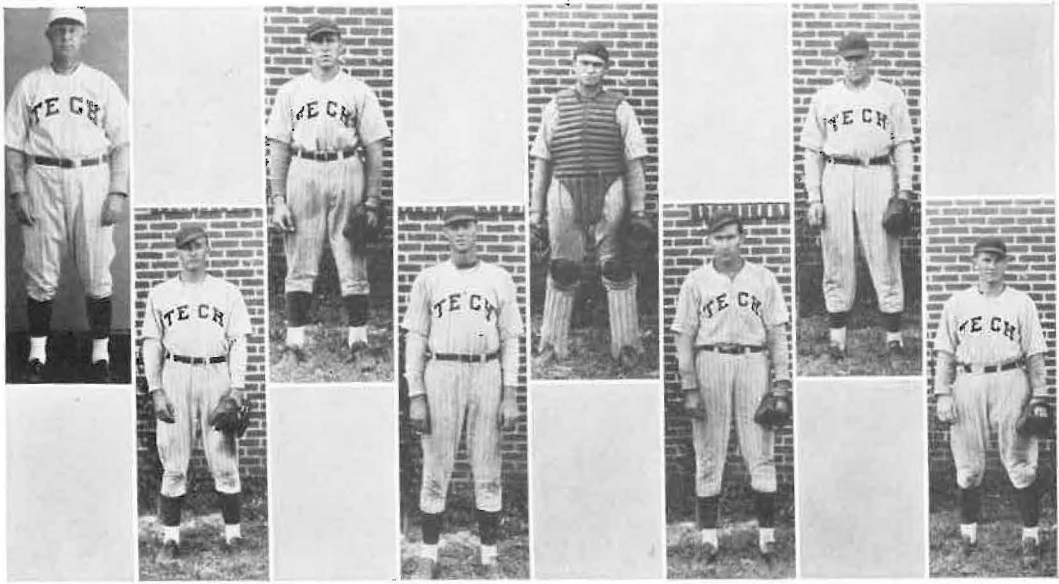
Wilhite



Deason



Hawkins

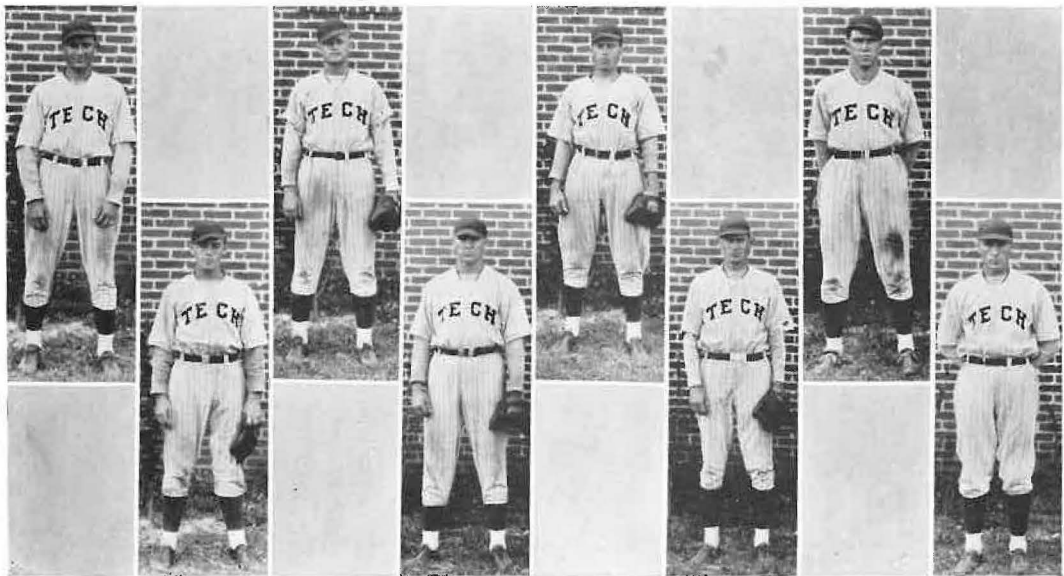


Coach Cowan Gibson Williams Robinson Horne Lewis Best Campbell

BASEBALL

Tech's baseball team, one of the leading contenders in the newly organized Arkansas College Baseball Association this year, has defeated every team in the circuit at least once this season. Consistent hitting and good fielding have done much to place Tech in this position, not to mention the remarkable pitching staff.

With many of the men returning next year, Coach Cowan should have another nine that Tech fans will follow with much interest.



Pettyjohn Hollabaugh Oakes Johnson Cato Hefley Davis Crumley



Burch



McCorkle



Godfrey



Teeter

TRACK



Coach Faulkner

Arkansas Tech's capable track team under the supervision of Coach Faulkner went far this year in athletic circles. They started off the season by setting a new record in the low hurdles at the T. C. U. invitational meet in Fort Worth. This record was set by the lanky Bill Burch.

The team swept through the season winning all dual meets except one, in which Ouachita beat them by one point.

Tech showed its true mettle by winning the State Track meet. In this record breaking meet five new records were set. Bill Burch kept



Edwards



Martin



Hawthorne



Rawlings



Lewis



Clements



Glass



Gardner

up his good record by lowering the old low hurdles record by one full second. Tech stole all three trophies, the two relays and the Sweepstakes trophy. The team set a new record in the 880 relay, running the race in the remarkable time of 1:30.2. This record setting team consisted of Martin, McCorkle, Edwards, and Burch, the latter running the anchor position. The mile relay team consisted of Hawthorne, Edwards, Godfrey, and Burch.

Credit for winning the first track meet ever won by Tech is due Coach John L. Faulkner. In his consistent efforts he has built up a track team which, always a threat since he came here, brought this honor to Tech this year.



State Trophies



Denton



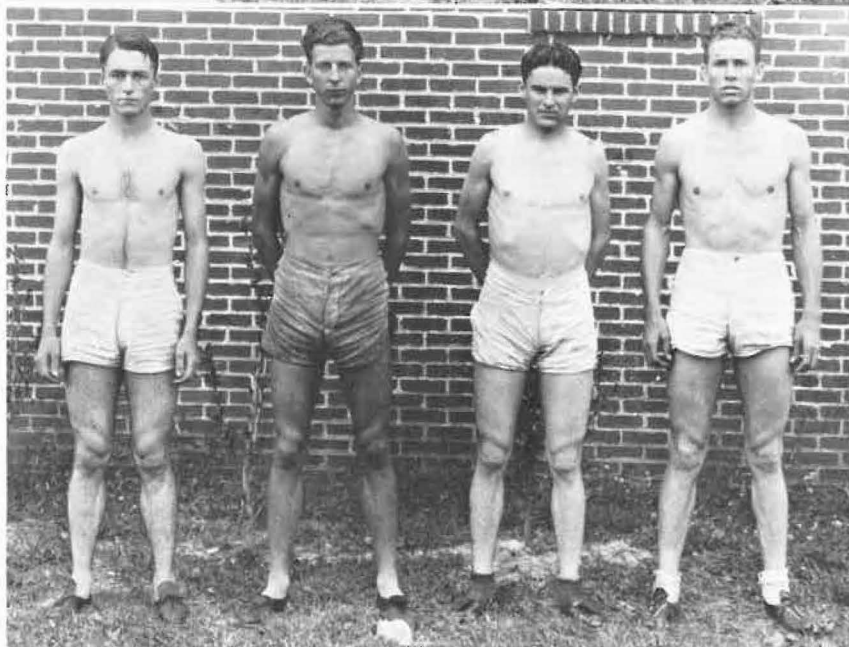
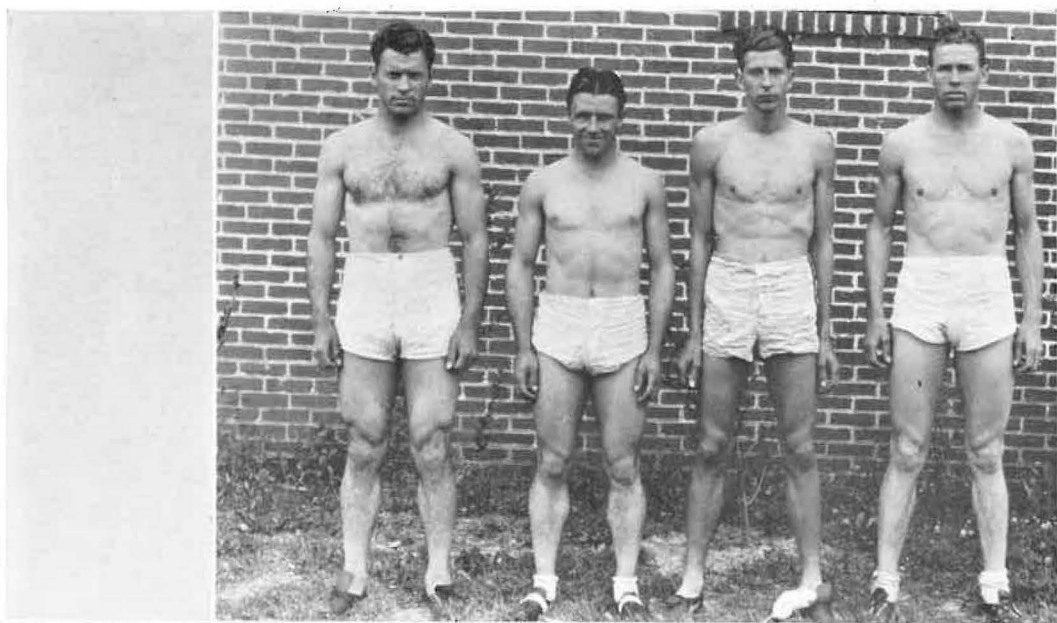
Goodner



Best



Watson

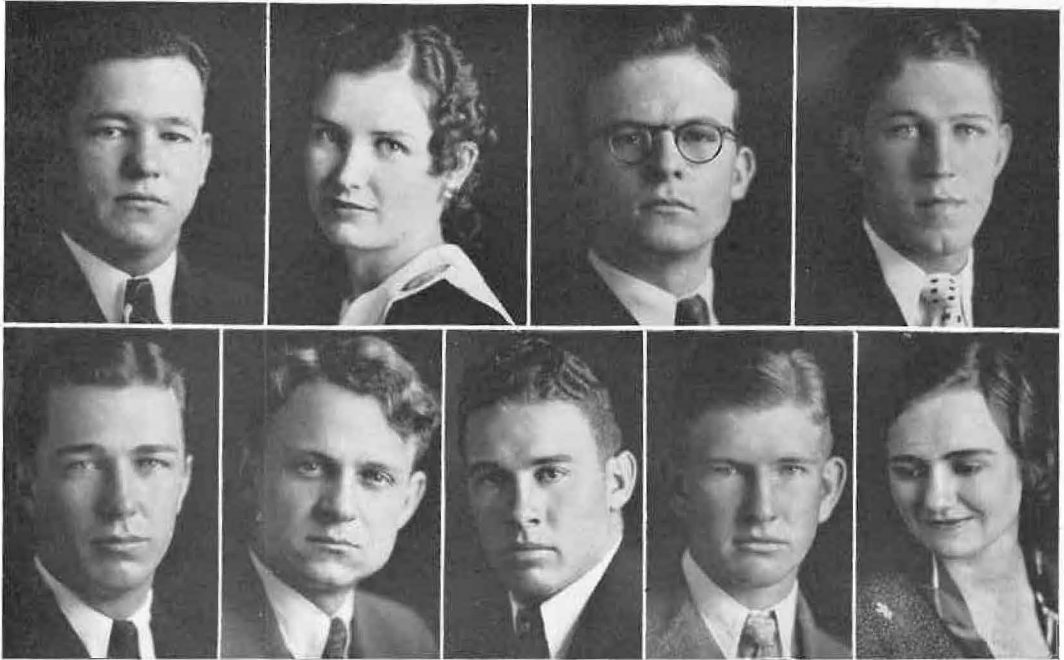


880-Yard Relay—Martin, McCorkle, Edwards, Burch.
Mile Relay—Hawthorne, Edwards, Godfrey, Burch.

Running brilliant races in the mile and 880-yard relays, Tech relay teams captured both events in the state track meet to enable the Tech team to bring home all the trophies offered. The 880-yard team set a new record of one minue 30.2 seconds, which will probably stand for some time. The mile relay team came within a fraction of breaking the old state record in that event.



ACTIVITIES



Student Government

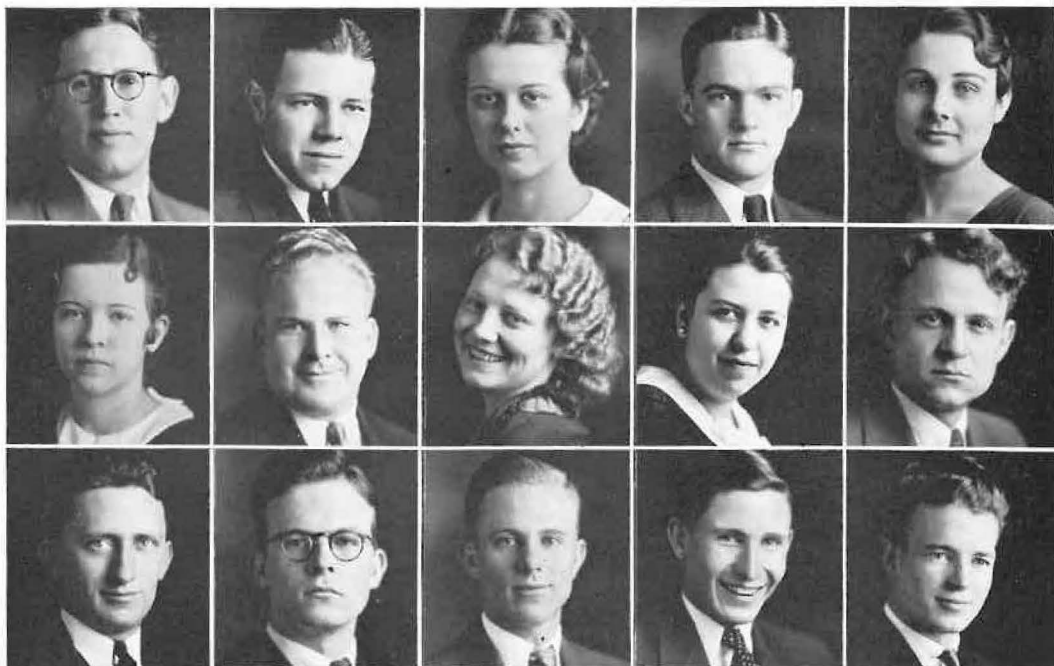
BY MILTON GARDNER

Organization for student government was initiated by the students of Arkansas Tech in February, 1933. At an election presided over by Gordon McCarty, temporary chairman, Milton Gardner was elected president of the student body.

The plan voted on and accepted by the student body provides for a Student Council with a membership composed of representatives for each fifty members of every department. This apportionment gave the following representations: Arts and Science, three; Education, two; Home Economics, one; Agriculture, one; and Engineering, one. Members elected and serving the remainder of the 1933 term were: Arts and Science, Arnold Henry, Louie Barnett, and Robert Hays Williams; Education, Bill Burch and Georgia Ellenbrook; Home Economics, Vergie Young; Agriculture, Howard Kidd; and Engineering, Jimmie Heath. The council elected Georgia Ellenbrook secretary.

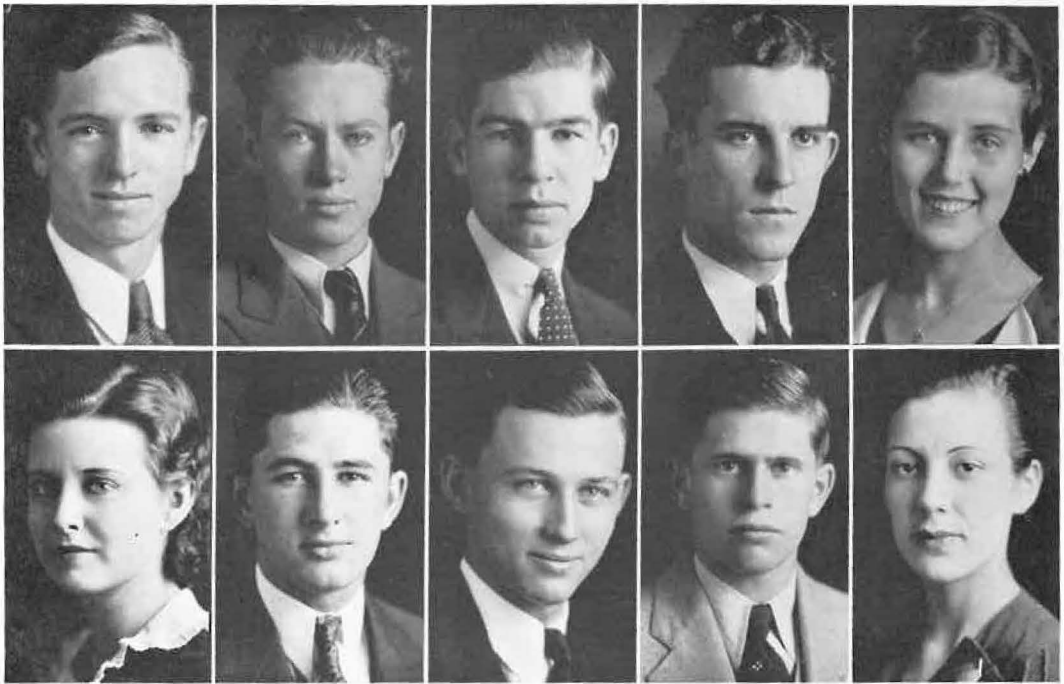
Immediate results were obtained by the Council. A constitution which gave the Student Council three representatives on the college athletic, publications, and social committees, was approved by the faculty and accepted by the student body. The Council also has control of all student elections, organizations, and migrations.

Permanent in its organization, the Student Council exists primarily to create better understanding and larger sympathies between the faculty and the student body. Its every action is for the welfare of the student body.



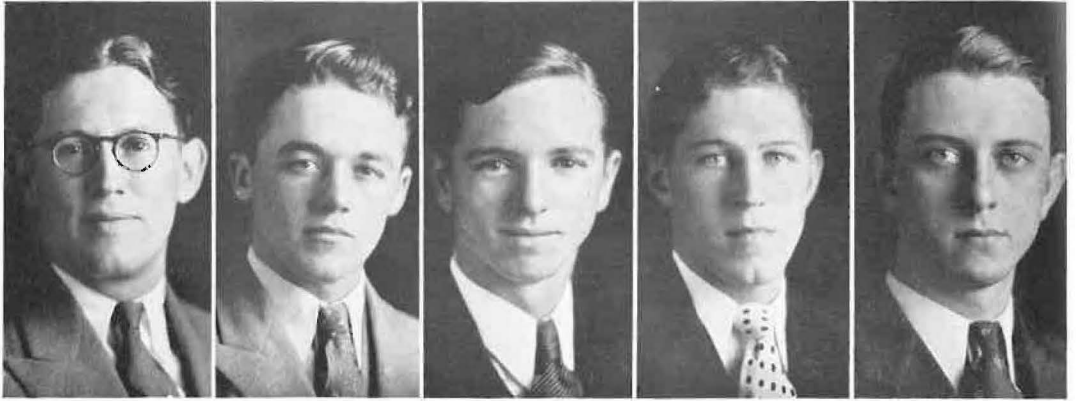
Agricola Staff

MORRIS BEST	<i>Business Manager</i>
MARY CATHERINE BAYLISS	<i>Assistant Editor</i>
WILLIAM A. LINDSAY	<i>Assistant Editor</i>
EULETA GIBSON	<i>Activities Editor</i>
LORA BETH HENRY	<i>Feature Editor</i>
DAVID WOODSON	<i>Athletic Editor</i>
WAYNE LLOYD	<i>Society Editor</i>
OTIS DANTE	<i>Class Editor</i>
JIMMIE HEATH	<i>Calendar Editor</i>
D. C. ROY	<i>Photo Editor</i>
ARNOLD HENRY	<i>Battery D</i>
ECIL DOUTHIT	<i>Battery F</i>
HARRELL SIMPSON	<i>Assistant Business Manager</i>
WILSON FALLS	<i>Assistant Business Manager</i>
ALFRED J. CRABAUGH	<i>Faculty Supervisor</i>



Tuba Agricola Staff

GORDON McCARTY	<i>Editor-in-Chief</i>
HERMAN TEETER	<i>Associate Editor</i>
V. J. HAYDEL	<i>Associate Editor</i>
WOODROW PETTY	<i>Associate Editor</i>
NEELIE EDGE (FIRST SEMESTER)	<i>Society Editor</i>
MARY ELIZABETH WEST (SECOND SEMESTER)	<i>Society Editor</i>
PAUL PECK	<i>Sports Editor</i>
ROBERT RAGLAND	<i>Business Manager</i>
ROYCE LOCKE	<i>Assistant Business Manager</i>
SARA BLAKELY	<i>Reporter</i>



State Champions in Debating

BY GORDON McCARTY

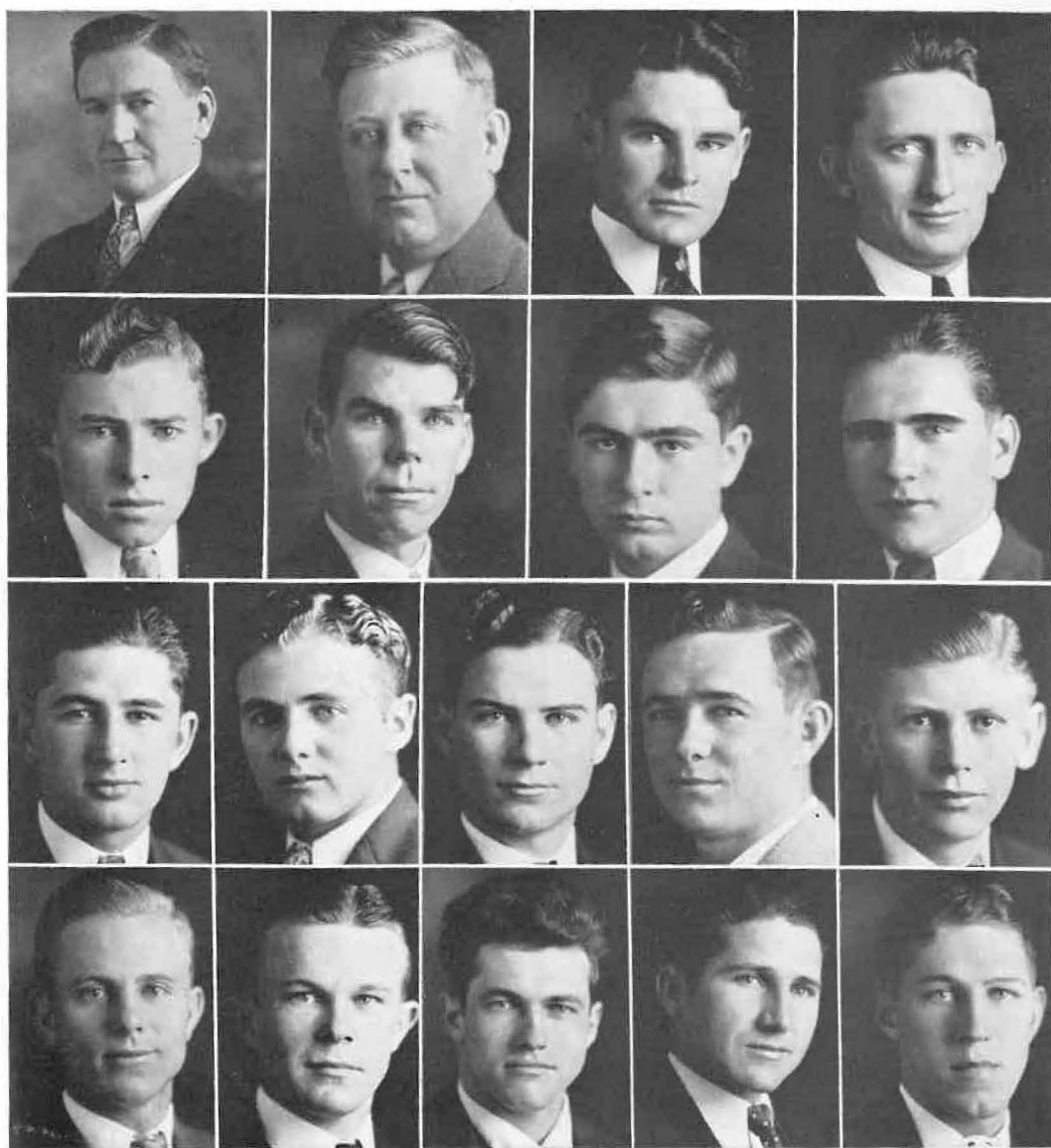
Nine candidates reported for debate Thursday, February 23. Under the direction of Alfred J. Crabaugh, the sponsor, they began an intensive study of the question "Resolved, That at least one-half of all state and local revenues in Arkansas should be derived from sources other than tangible property."

Tryouts were held March 22 and the squad reduced to four members, Marcus Hollabaugh, Gordon McCarty, Robert Hays Williams, and Lawrence Lance. A few days later these four were assigned their positions on the team.

The only appearance the squad made prior to the state contest was in a debate delivered before the student body the week before the state meet.

In the state contest at Little Rock, May 6, the team came through with six victories and no defeats to win the state title. The affirmative defeated Henderson State, Magnolia, and Little Rock; the negative proved stronger than Monticello in its first debate and El Dorado in the next two.

Three of the members of the team are freshmen and will return next year, so that prospects for the 1934 team are very bright.



Y. M. C. A.

G. R. Turrentine and N. F. Cooledge, Sponsors. Cabinet 1932-'33: D. C. Roy, president; Francis Waits, vice-president; Ben Ingram, program; Hope Mitchell, finance; Ecil Douthit, athletics; Amos Spicer, extension; Charles McClelland, religious; Robert Eikleberry, freshman fellowship; Robert Hays Williams, social. Cabinet 1933-'34: Howard Godfrey, president; Irvin Hatchett, vice-president; Thurman Shuller, secretary-treasurer; Paul Peck, program; Lloyd Hardgraves, finance; F. B. Clement, athletics; Russell Widmer, extension; Ecil Douthit, religious; Amos Spicer, freshman fellowship; Gene Waldon, social. Roll: Bennett Adams, Hays Beard, John Bell, Frank Benson, George Blevins, J. W. Bryan, Ernest Davis, L. L. Denton, John Dugal, Mark Forrest, Reid Glover, E. J. Guise, Oather Hall, Clay Hansen, Estel Hopkins, Dildford Hutchins, Hansel Jacobs, Robert Keathley, Earl Kingsley, Charles Laughlin, Joe Maxwell, Earl Pettyjohn, Robert Pettyjohn, Doyle Pierson, James Ray, Alma Reed, Eugene Renneker, Carlee Riggs, Dale Sandlin, Clifford Smith, Roy Taylor, Chester Torbett, Wilbur Watson, Cole Westbrook.

Y. W. C. A.

The Arkansas Tech Y. W. C. A. meets every Monday night. The purpose of the organization is stated as follows: We, the members of the Young Women's Christian Association of Arkansas Polytechnic College unite in the desire to realize full and creative life through a growing knowledge of God. We determine to have a part in making this life possible for all people. In this task we seek to understand Jesus and to follow him.

The Y. W. has been active in Social Service work this past year. The members have had as one of their aims visiting the jail, county farm, and hospital of Russellville.

The annual Y. W. Banquet was held at the Palace Hotel December, 1932, with forty-five members present. Another feature of the year's activities was the annual trip of Y. W. members to the Petit Jean Conference at Morrilton. Tech "Y" was well represented.



OFFICERS FIRST SEMESTER

- DOROTHY FOUNTAIN *President*
- TREVA LANDERS *Secretary*
- ZELMA KUMPE *Treasurer*
- TREVA LANDERS *Reporter*

OFFICERS SECOND SEMESTER

- EULA CRAVENS *President*
- LETHA SUGG *Secretary*
- EUNICE BARTLETT *Treasurer*
- TREVA LANDERS *Reporter*

COMMITTEE CHAIRMEN

- OTIS DANTE *Social*
- EDITH LUNN *Program*
- ZELMA KUMPE *Finance*
- LETHA SUGG *Social Service*



Roll: Miss Lela Jane Bryan, honorary member; Louise Anderson, Hazel Bewley, Jewel Buchanan, Jessie Marie Burris, Mildred Caldwell, Imogene Cox, Ione Crossley, Otis Dante, Caroline Davidson, Jewel Deason, Georgia Ellenbrook, Kathleen Gibbons, Evelyn Gill, Eula Gurley, Adele Harris, Missie Hawkins, Mary Ellen Jackman, Wenonah Jewell, Addie Sue Knight, Wayne Lloyd, Edith Lunn, Mary Ann Matlock, Virginia Mims, Katherine Nelms, Lucille Nelson, Arkie Myrtle Pickren, Anna Lena Reinhardt, Elizabeth Sims, Geta Smith, Bernyce Stutts, Ruby Nell Taylor, Alma Taylor, Ruth Taylor, Susanna Tindall, Hazel Thielke, Maxine Ussery, Bernice Villines, Glynda Waits, Clara Walker, Mary Elizabeth West, Velva White, Nellie Wilhite, Hazel Wofford.

Band and Orchestra

BY LORA BETH HENRY

Marvin Williamson, director, has led his college band and orchestra through a very successful year.

A bugle corps was added to the Tech Drum Corps and the two were combined into one organization, which has aided the band in many social activities, representing the school at concerts, chapel programs, and in parades. The members cooperated willingly. They paraded twice Agri Day, May 4, through a hard rain.

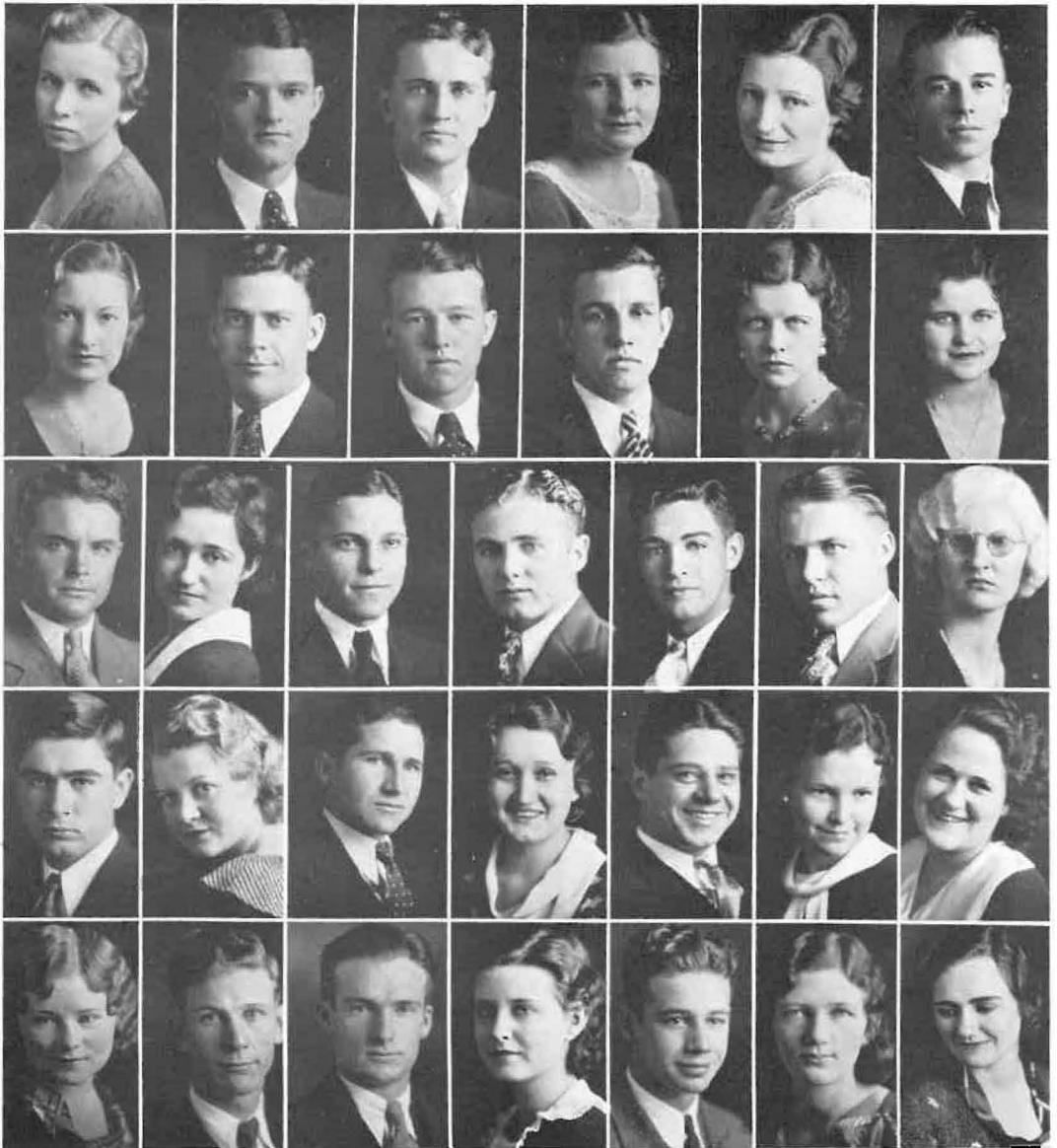
The Band and Drum Corps made their annual trip to the Armistice Day Game at Little Rock, November 11, and received favorable comment both in parade and at the game. They also broadcasted a program from KGHI on that day. They played a prominent part in the Tech-Monticello football game at Hot Springs, November 18.

Tech's Concert Orchestra made several appearances this year. It presented one assembly program and gave the opening number of the Agri Day program.

This has been the most successful year "George and his Golden Greens" have had. Not only has this dance orchestra played for college functions but it has been much in demand for other dances as well, averaging one engagement a week since October.

The band, orchestra, drum and bugle corps are a necessary part of Tech student life, and Mr. Williamson is to be commended for his efficiency in directing one of the outstanding musical organizations in the state.





Mixed Chorus

PAULINE AUSTIN, *Director*

EVELYN GILL, *Accompanist*

Roll: Frank Benson, Jimmie Bratton, Elsie Ree Eidson, Nora Lee Eidson, Billy Free, Bill Goodner, Estel Hopkins, Hansel Jacobs, Ruth Jacobs, Ruby Jacobs, Edith Lunn, Charles McKinzie, Hope Mitchell, James Reed, Eugene Renneker, Claudine Shoptaw, Elizabeth Sims, Amos Spicer, Thurman Shuller, Ruby Nell Taylor, Leroy Tipton, Mary Sue Turner, Bernice Villines, Umaldy Waterfall, Glynda Waits, Mary Elizabeth West, Roy Weedon, Paul Williamson, Hazel Wofford, Virgie Young.



ORGANIZATIONS

ARKANSAS POLYTECHNIC COLLEGE



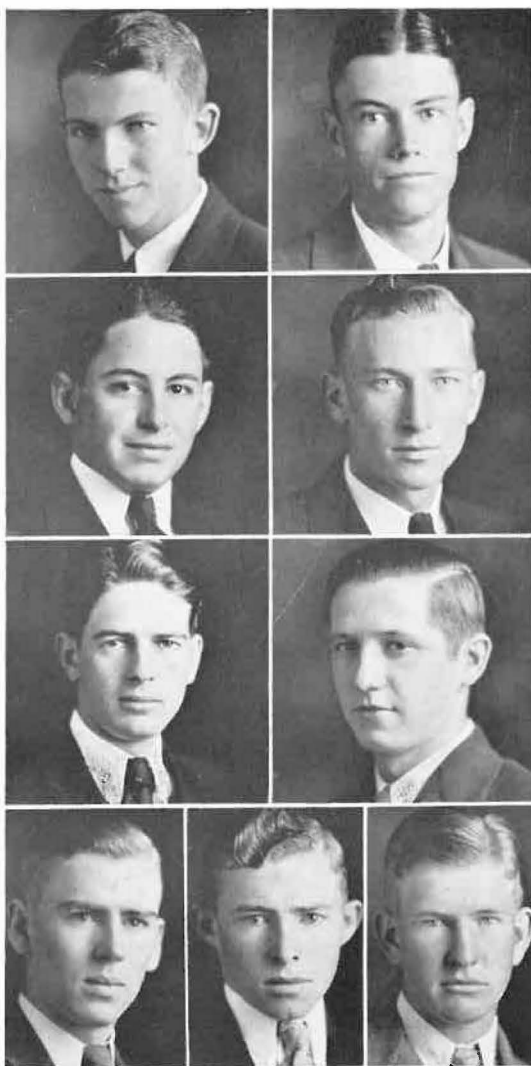
Home Economics Club

Miss Lela Jane Bryan, sponsor. Officers first semester: Vergie Young, president; Hazel Thielke, vice-president; Glenda Waits, secretary; Jean Avance, treasurer. Officers second semester: Edna Griffin, president; Letha Sugg, vice-president; Alta Mae Webb, secretary; Jean Avance, treasurer; Marguerite Matthews, reporter. Roll: Miss Margaret Martens and Miss Bessie Parker, honorary members; Sarah Blakely, Jessie Marie Burris, Lucile Campbell, Fannie Rhea Cheek, Charlotte Conley, Eula Cravens, Margaret Douglas, Missie Hawkins, Mary Ellen Jackman, Edith Lunn, Katy McAlister, Jessie Rye, Bernyce Stutts, Susanna Tindall, Maxine Ussery.

Agri Club

Since 1922, the year of its organization, the Agri Club has stimulated interest among the boys who are interested in the field of agriculture. This group fully appreciates the value of the farmer to the life of the nation and by the work in the Agri Club seeks to study the farming problems and to raise the standards of the methods of farming.

Membership is voluntary. No boys are wanted in the club that are not in sympathy with its purpose. The club seeks to develop within its members those qualities of manhood that will make them willing to endure, to have faith in themselves, in their station of life, and in their fellowmen.



OFFICERS FIRST SEMESTER

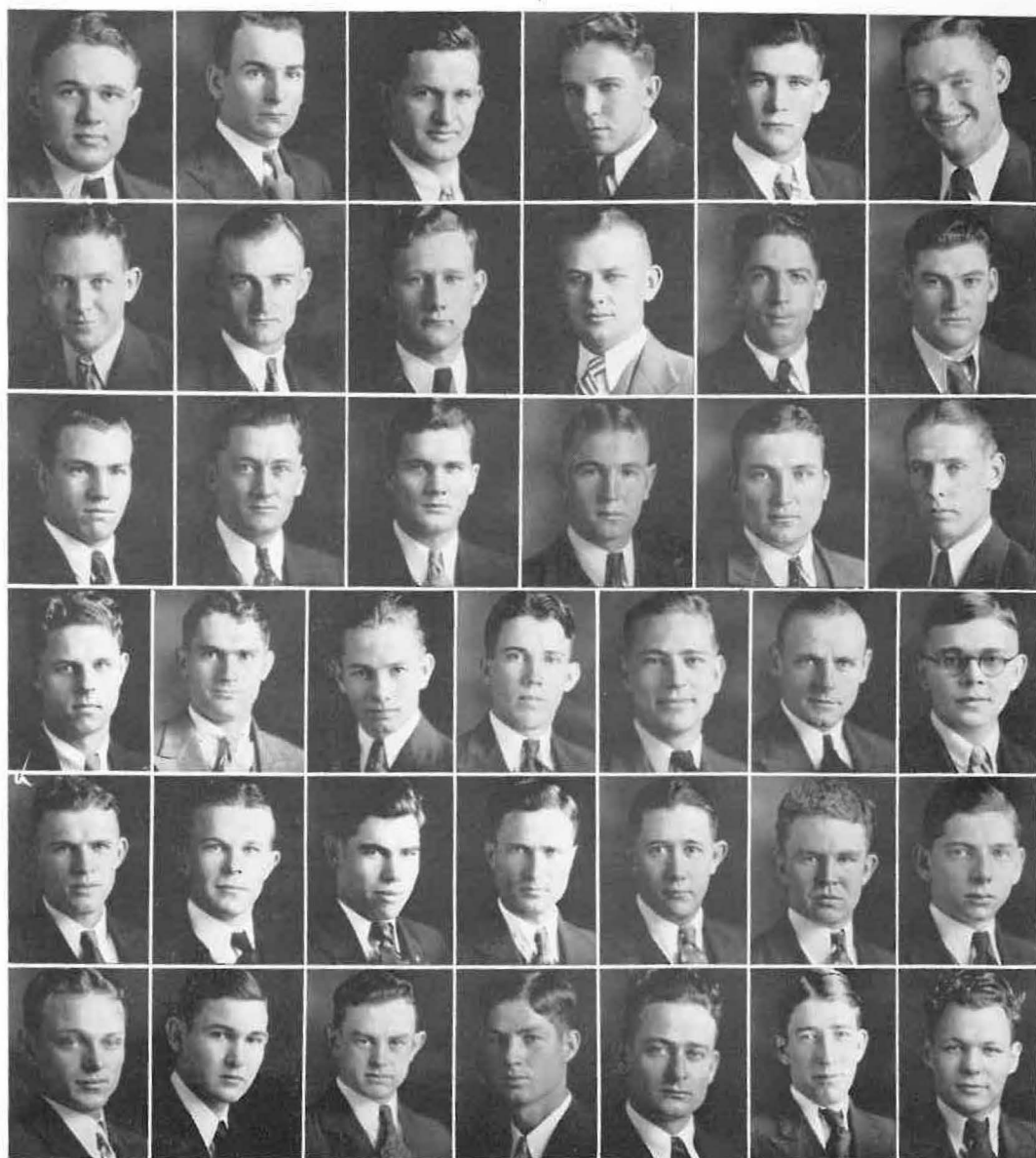
- HUGH WRIGHT *President*
- GRADY KNIGHT *Vice-President*
- CLAY HANSEN *Vice-President*
- ROBERT HEAD *Secretary*
- FRANCIS WAITS *Treasurer*
- T. A. RALEY *Reporter*

OFFICERS SECOND SEMESTER

- RALPH BLAIR *President*
- OTHEL FULLEN *Vice-President*
- JACK CATO *Secretary*
- HAYS BEARD *Treasurer*
- HOWARD KIDD *Reporter*



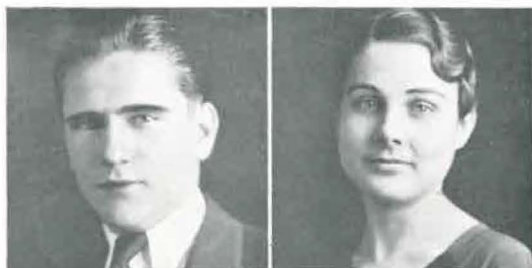
JOHN L. FAULKNER, *Sponsor*



Roll: George Blewins, Hugh Bunch, Robert Eikleberry, Mark C. Forrest, Harold Fortenberry, Milton Gault, Roy Green, E. J. Guise, Earl Halsey, Edward Halsey, Earnest Hogan, Dildford Hutchins, Garland James, Hurstle Little, Espie Landers, Joe Maxwell, Emil Martin, Floyd Morris, Ray Moudy, Calvin McMIndes, Glen McBride, Andrew Patten, Charles Reader, Alma Reed, Grady Robinson, Clifford Smith, Vol Smith, Roy Taylor, Earnest Teeter, Oscar Threet, Chester Torbett, Buck Walker, Wilbur Watson, Cole Westbrook, Merritt Wilbur, Tom Wilson, Carroll Wood, Rufus Wood.

History Club

The History Club is composed of students who are primarily interested in the study of history and in promoting a greater interest in governmental science. Meetings, which are held bi-monthly at the home of the sponsor, Professor T. A. DuLaney, consist of programs of current and historical interest, and a social hour. The club's main project is the Museum. This year a collection of Indian relics was added. The float on Agri Day of this year, which represented "Pioneer Arkansas," was awarded third place. The annual social events are a banquet for former members held on home-coming day, trips to Dwight's Mission and to Subiaco College.



OFFICERS FIRST SEMESTER

EULETA GIBSON *President*

D. C. ROY *Vice-President*

MARIE WHITESIDE . *Secretary-Reporter*

RUTH BRAZELTON *Treasurer*



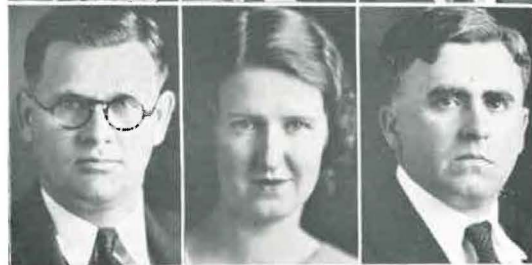
OFFICERS SECOND SEMESTER

DOROTHY FOUNTAIN . . . *President*

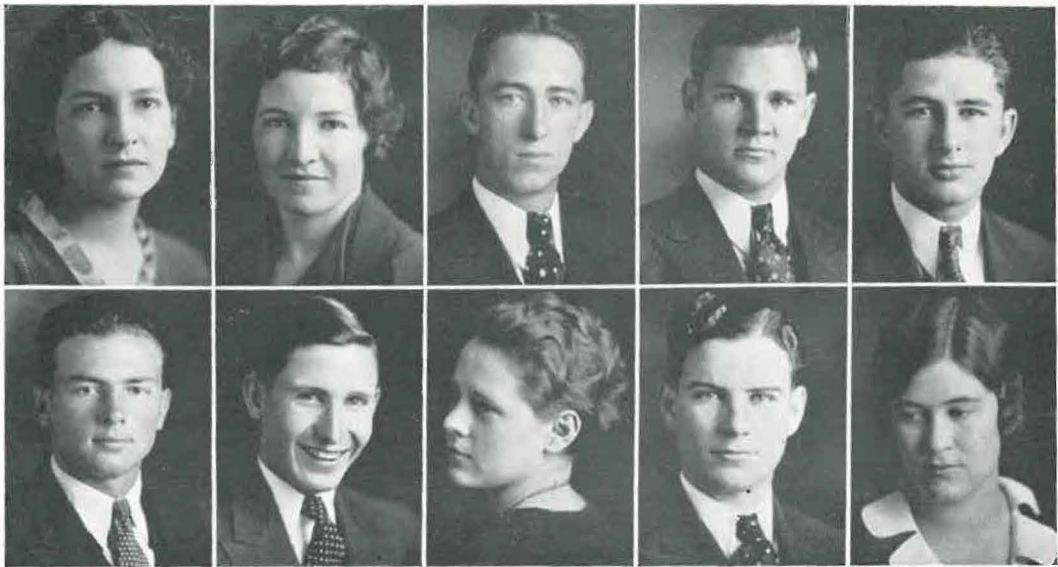
CAROLINE DAVIDSON . *Sec'y.-Reporter*

CHARLES MCKENZIE . . . *Treasurer*

WAYNE JOHNSON . . *Parliamentarian*

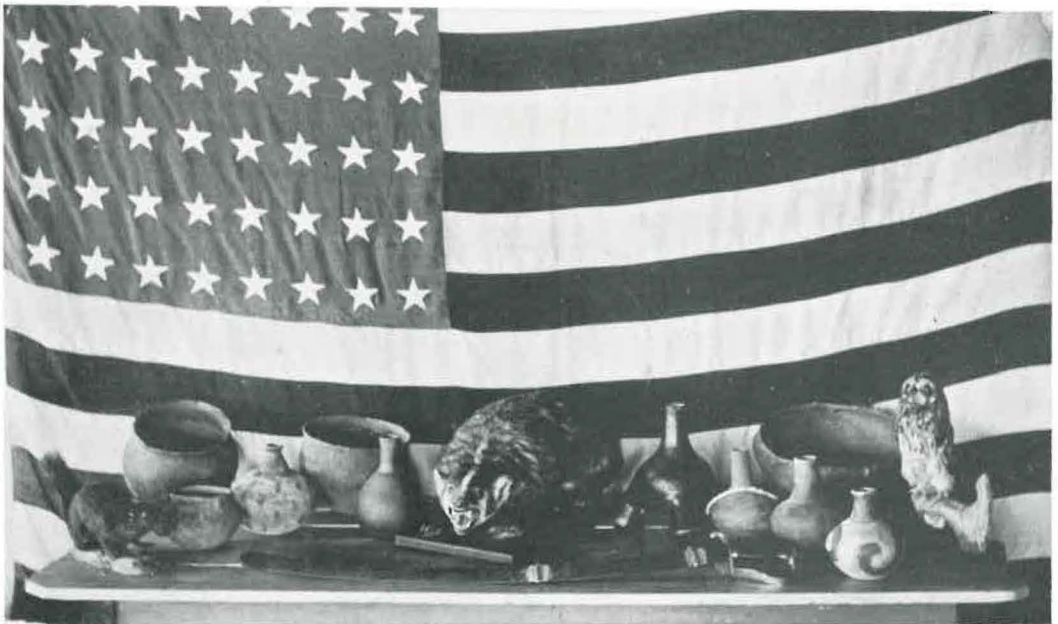


T. A. DuLANEY, *Sponsor*



Roll: Mary Ruth Darr, Virginia Lee Darr, William Caskey, Dallas Johnson, Paul Peck, Stanley Resimont, Harrell Simpson, Martha Sue Turner, Gene Waldon, Clara Walker.

Visitors are cordially invited to visit the Tech Museum. The scene below is of one of the several groups to be found in the museum room. The various parts of this collection have been presented to the museum by the history club students during the past two years. Most of the Indian pottery shown was unearthed this winter near Russellville. Many ancient styles and customs may be studied by visiting the museum.



French Club

Le Cercle Francais met for the first time April 30, 1930. Since that date it has never faltered in its sincere aim to promote interest in the study of the language and the people of our neighbors, the French. On April 30, 1932, Le Cercle Francais had its banquet with such success that it was decided to make the French banquet an annual affair to climax the year.

Members of the French Club are chosen for their interest in French and in activities and the scholastic rank of Le Cercle Francais is with the highest.



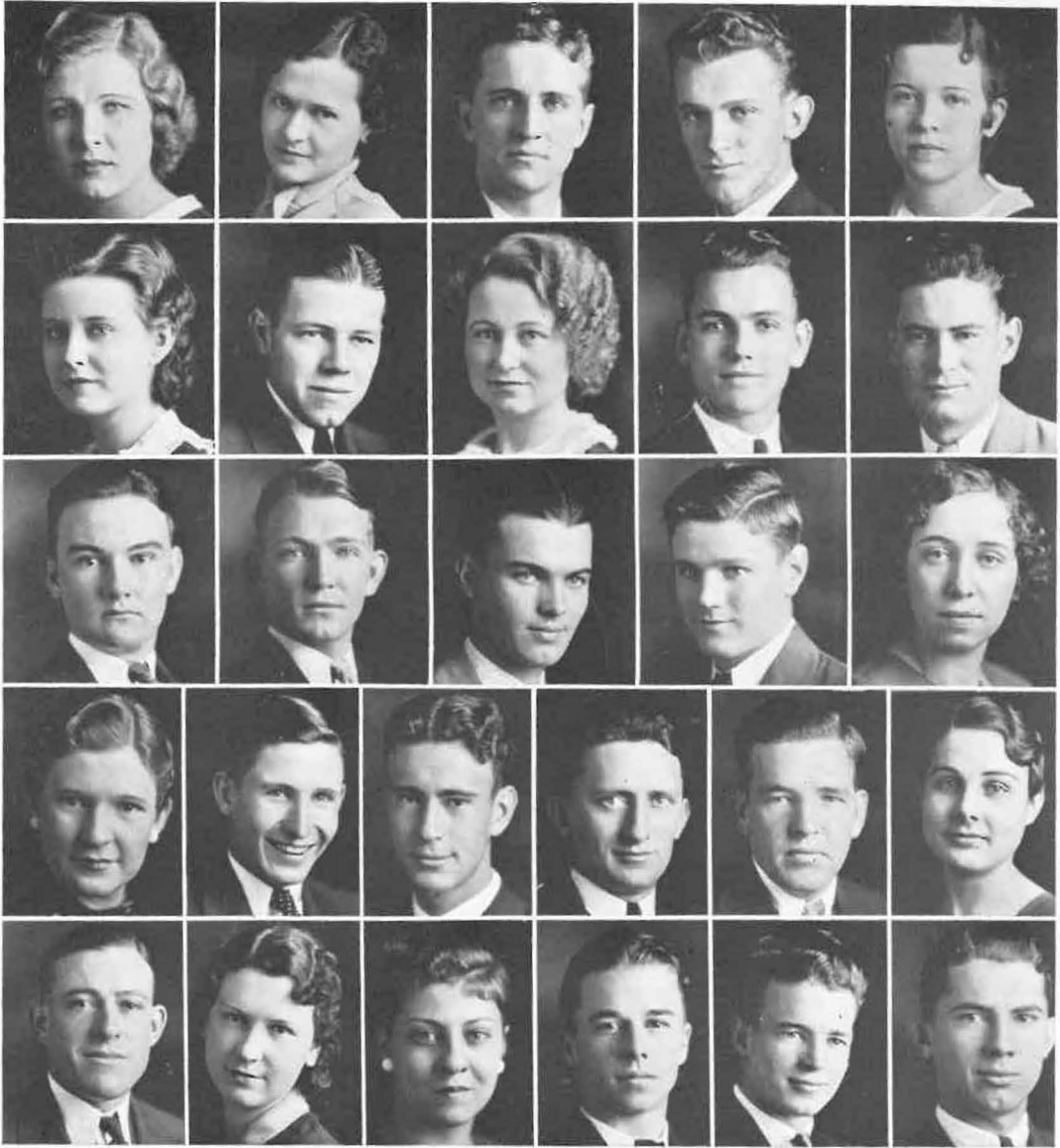
OFFICERS FIRST SEMESTER

- ARNOLD HENRY *President*
- RUBY MARY BREEDLOVE . *Vice-President*
- MARIE WHITESIDE *Secretary*
- MARY RUTH DARR *Treasurer*
- ELLIS GARDNER *Librarian*
- BEN INGRAM *Reporter*
- ELIZABETH LYTTLE *Pianist*

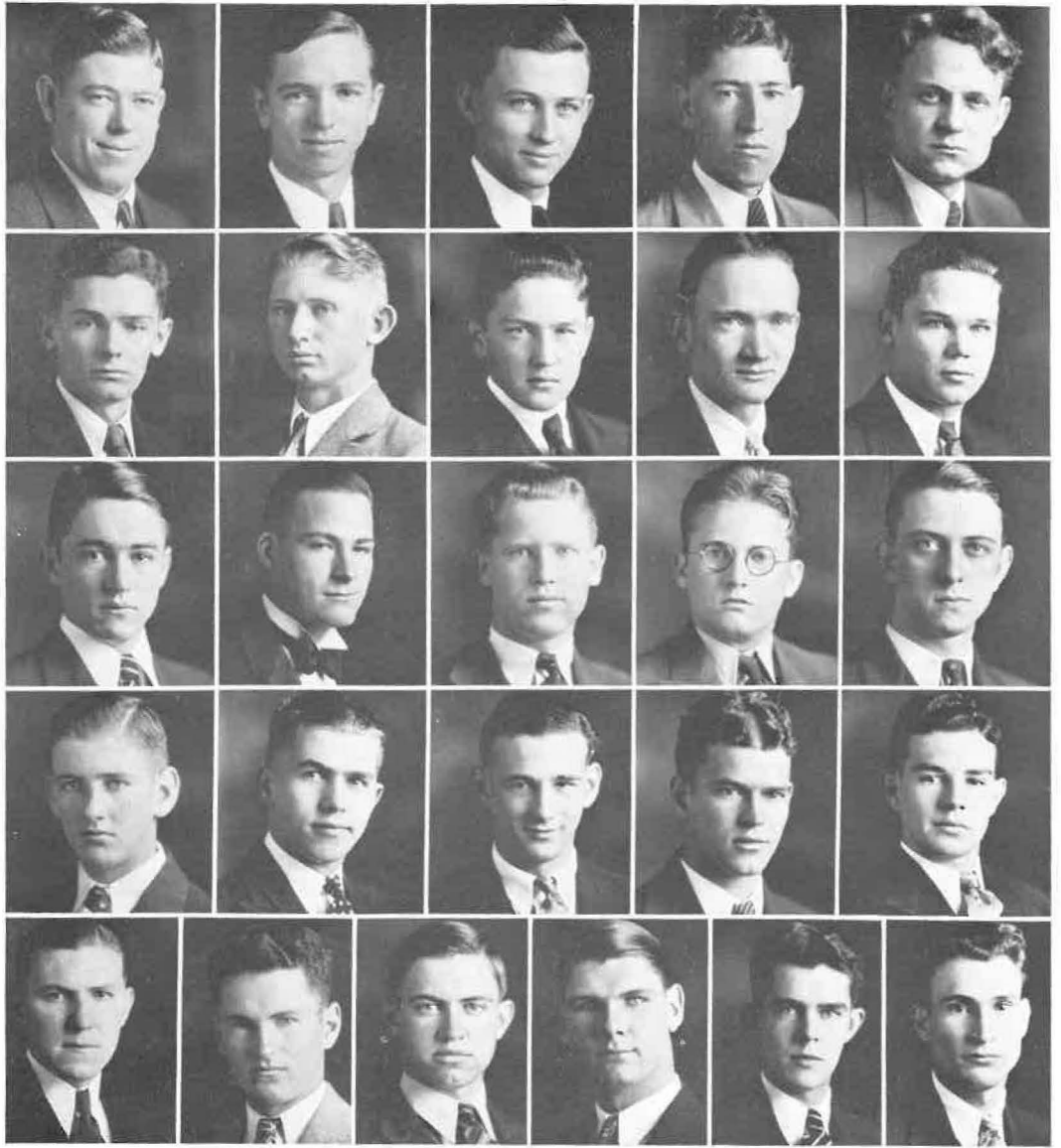
OFFICERS SECOND SEMESTER

- ELLIS GARDNER *President*
- NANNIE JEAN RYE . . . *Vice-President*
- MARY CATHERINE BAYLISS . *Secretary*
- CAROLINE DAVIDSON . . . *Treasurer*
- STANLEY RESIMONT *Librarian*
- HERMAN TEETER *Reporter*

Mrs. MAUDE L. ROCKS, *Sponsor*

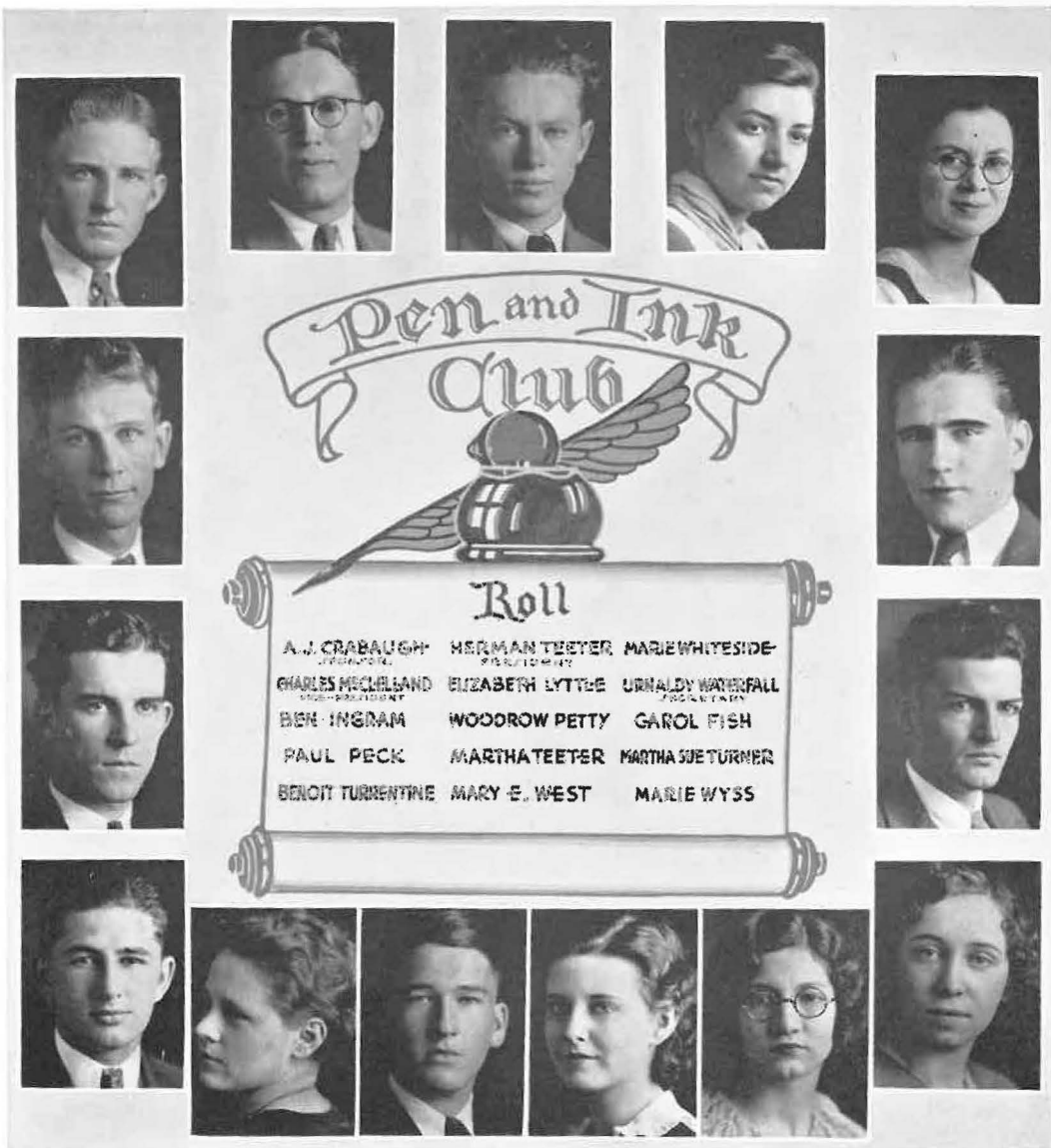


Roll: Miss Marie Angehr and Miss Myrtle Roush, honorary members; Morris Best, Jimmie Bratton, Thomas Burgess, Maxine Clark, Jewel Deason, Lee Denton, Thomas Edwards, Ray Evans, Wilson Falls, George Faust, Billy Free, Euleta Gibson, Wilburn Hart, Ernest Hefley, Lora Beth Henry, Alton McLeod, Eva Merritt, Margaret Price, James Riley, D. C. Roy, Alma Sawyer, Harrel Simpson, Clayborne Thacker, Martha Teeter, Milford Wallace, Mary Elizabeth West.



Engineering Club

Clyde R. Nichols, Sponsor. Officers: Gordon McCarty, president; Robert Ragland, vice-president; Lemuel Fletcher, secretary-treasurer; Jimmie Heath, reporter. Roll: Bennett Adams, Seldon Atkins, Harry Bernard, Fred Cloninger, Harold Cummins, Woodrow Hawthone, Chales Hedden, James Hines, Francis Keeton, Lawrence Lance, Charles Laughlin, Fred Leggett, Will Northen, James Ray, Ralph Rawlings, Harry Robinson, Lester Satterfield, Wayne Spainhour, Kirkman Stubblefield, Robert Weatherman, Elmer White.



Pen and Ink
Club

Roll

A. J. CRABAUGH <small>VICE-PRESIDENT</small>	HERMAN TEETER <small>HISTORIAN</small>	MARIE WHITESIDE <small>PRESIDENT</small>
CHARLES McCLILLAND <small>VICE-PRESIDENT</small>	ELIZABETH LYTTLE <small>SECRETARY</small>	URNALDY WATERFALL <small>VICE-PRESIDENT</small>
BEN INGRAM	WOODROW PETTY	GAROL FISH
PAUL PECK	MARTHATEETER	MARTHA SUE TURNER
BENOIT TURBENTINE	MARY E. WEST	MARIE WYSS

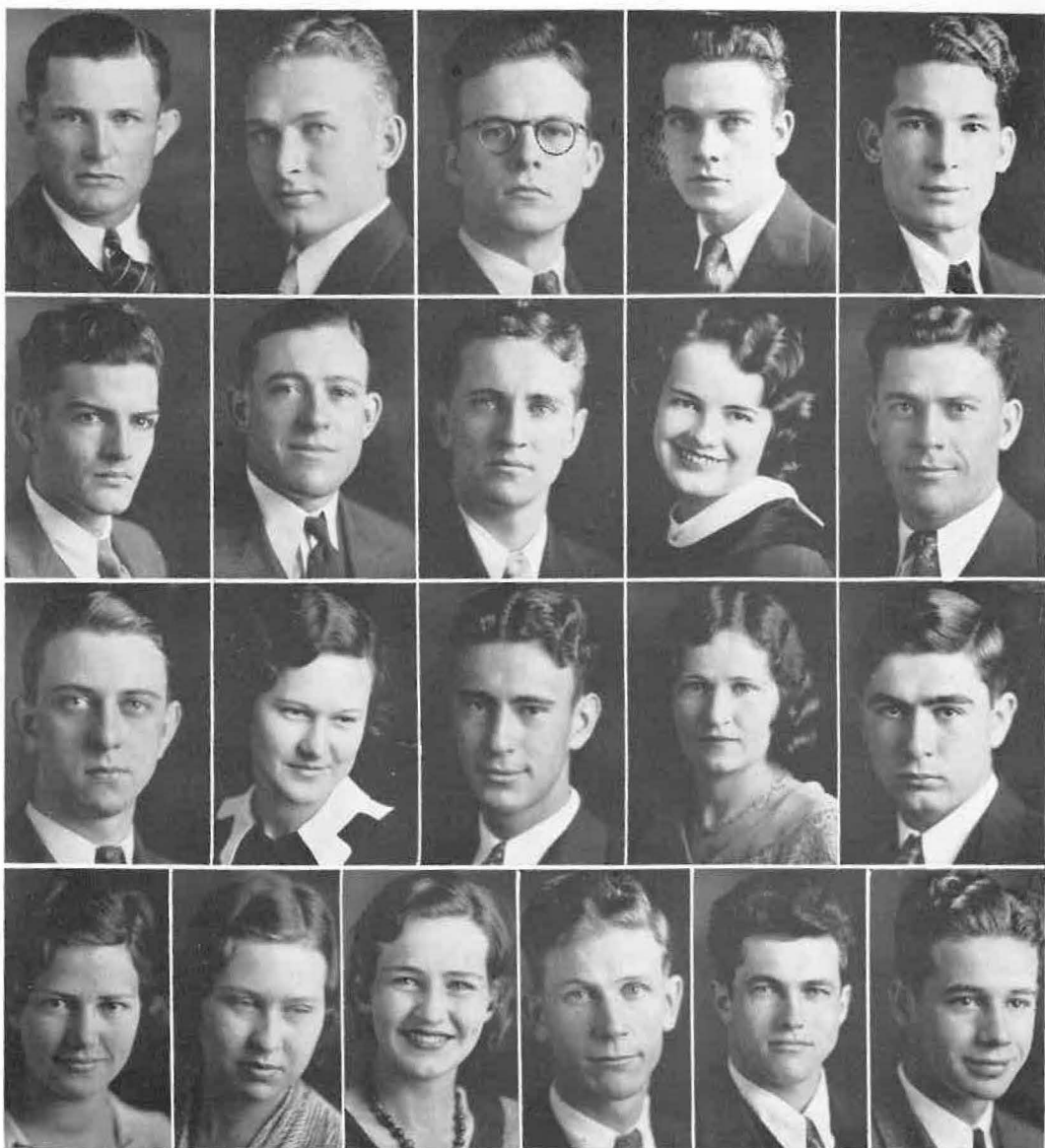
First semester officers: Marie Whiteside, president; Ben Ingram, vice-president; Elizabeth Lyttle, secretary; Herman Teeter, historian. Honorary member, Marie Angehr.

The Pen and Ink Club, which was organized in 1931, is composed of students who are interested in creative writing. At the club meetings members read their own contributions and profit by the frank discussion of the merits of their writings. Members are selected from outstanding students in English composition.



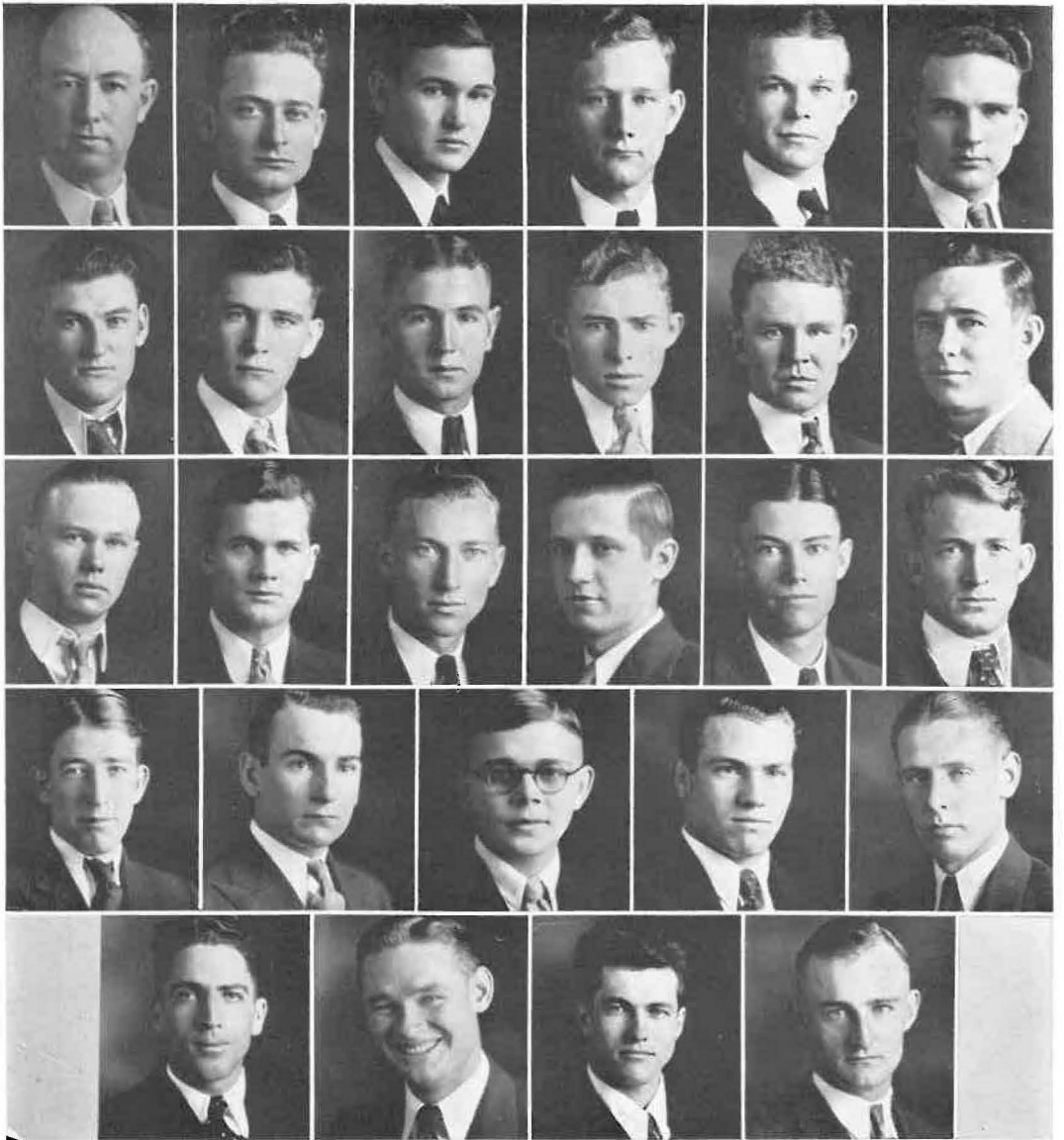
Dramatic Club

Miss Pauline Cox, Sponsor. Officers: Curtis Henderson, president first semester; Alyce Robbs, president second semester; Elizabeth Lyttle, vice-president; Zelma Kumpe, secretary; Nannie Jean Rye, treasurer; Mary Elizabeth West, reporter. Roll: Mary Pearl Gibson and Mrs. Farrish, honorary members; Otis Dante, Margaret Douglas, Mabel Ewing, George Faust, Bobby Keathley, Rosamond Pierce, Alma Sawyer, Claudine Shoptaw, Mary Sue Turner, Benoit Turrentine, Bernice Villines, Warren West, David Woodson.



Science Club

John E. Tucker, Sponsor. Officers first semester: Arnold Henry, president; Ralph Cole, vice-president; Carroll Fish, secretary; Thomas Burgess, treasurer. Officers second semester: Ralph Cole, president; Andrew Henry, vice-president; Charles Cazort, secretary; Thomas Burgess, treasurer; Arnold Henry, reporter. Roll: Jimmie Bratton, Eula Cravens, William Goodner, Dorothy Howell, Lawrence Lance, George Patchell, Anna Lena Reinhardt, James Riley, Jessie Rye, Thurman Shuller, Naomi Shinn, Hazel Thielke, Susanna Tindall, Umaldy Waterfall, Russell Widmer, Paul Williamson.



F. F. A. Club

C. A. Hughes, Sponsor. Officers first semester: Milton Gault, president; Robert Eikleberry, vice-president; James Wisner, secretary; Roy Taylor, treasurer; Francis Waits, reporter. Officers second semester: Chester Torbett, president; Wilbur Watson, vice-president; Floyd Morris, secretary; Dildford Hutchins, treasurer; E. J. Guise, reporter. Roll: George Blevins, J. W. Bryan, F. B. Clement, Elmer Gregory, Earl Halsey, Clay Hansen, Robert Head, Grady Knight, Lloyd Ladd, Emil Martin, Joe Maxwell, Ray Moudy, Alma Reed, Clifford Smith, Oscar Threet, E. J. Westbrook, Russell Widmer, Carroll Wood.



L. of L. Club

Miss Bessie Parker, Sponsor. Officers: Dorothy Fountain, president; Vergie Young, vice-president; Zelma Kumpe, secretary; Margaret Douglas, treasurer. Roll: Miss Pauline Cox and Miss Myrtle Roush, honorary members; Lucile Campbell, Maxine Clark, Ione Crosley, Jewel Deason, Mabel Ewing, Evelyn Gill, Clynell Grace, Inez Holt, Mary Ellen Jackman, Wenonah Jewell, Wayne Lloyd, Katherine Nelms, Lucille Nelson, Alyce Robbs, Alma Taylor, Susanna Tindall, Hazel Thielke, Bernice Stutts, Letha Sugg, Maxine Ussery, Mary Elizabeth West.



ADVERTISEMENTS

Compliments of

THE
NEW STORE

"In Russellville Since 1895"

Better
Dresses

Admiration
Hosiery

DAVIS
Fashion Shoppe

"We Show the Latest First"

"The Shop for Women"

Chic Hats

Novelty Shoe

Community Theatre

The Pick of the Pictures

When Better Pictures Are Made

WE WILL SHOW THEM

YOUR ENTERTAINMENT

IS OUR BUSINESS

E. R. GILLET, *Mgr.*

RUSSELLVILLE,

ARKANSAS

The Diary of Joe College

AS TOLD TO JIMMIE HEATH

September 4-9. The beanery and dormitories open. What a crowd of freshmen are here; Their main problem in etiquette is how to make the beans stay on their knife—any sophomore could tell them to dip the knife in zip. Boy, these teachers are busy registering these cravers of knowledge and otherwise. A guy in a green cap wants to know what an I. Q. is. Tech looks like a new school with all its improvements. The mill of registration is still grinding away. These freshmen girls are the apple of my eye. Kinda different. The one thing that should be left out of college started today—those darned classes. The freshmen are hopping to the tune of the upperclassmen. The faculty reception and dances started the social progress of the Alma Mater in an interesting way. Math and Public Speaking should be popular courses.

September 9-15. First date night. Do these freshmen girls look swanky? Got into Uncle Sam's Army today but when I had to get up in the middle of the night for drill can't say I was so enthusiastic about it.

September 15-22. A little mouse turned the campus lights out for us. What a break! Boy, oh boy, a new star in my sky and what a star. The misery begins. Had our first chapel today.

September 22-30. The gridiron is a busy place. Our prospects for the year look great. First pep meeting held in armory—not so bad. Romance in K progressing in a big way. First date with Miss Co-ed.

October 1-6. Murder in Rue South; Poor Baltimore. Night football starts; the lights were under construction, but nevertheless. Big pep meeting for the Arkansas College game—did those freshmen look swanky in full dress—for bed. Party at Carl's Place.

October 7-13. Defeated Arkansas College 93-0. Party in Spook House. Went to the big pep meeting on Buerkle field. The bonfire was spectacular. Went to the Homecoming game with my little so and so. Hendrix 6—Tech 7. Big dance after the game.

October 14-21. Am getting my machine gun in shape to operate on a big blond for courting my gal. When the storm is over and those black clouds show their silver lining, isn't it great. Circus Day—one Coyote missing. Sneak parties originate in the library. (Indulged instead of a sweet. Pep meeting. Romance improving. Saw the team off to Magnolia.

THE CITY BAKERY

Bakers of

"MILK-MAID BREAD"

A COMPLETE LINE OF BAKERY PRODUCTS

Raymond Trammell, Prop.

TRAMMELL'S CAFE & CONFECTIONERY

Boulder Avenue and Main Street

Complete Cafe Service — Complete Fountain Service

CANDY - CIGARS - TOBACCO

WE APPRECIATE YOUR PATRONAGE

BURNETT-WYSS LUMBER CO.

Manufacturers of

YELLOW PINE LUMBER

PHONE 196

Russellville, Arkansas

Mathews Investment Co.

Incorporated

CAPITAL \$100,000.00

Receivers - Trustees - Real Estate - Rental
City and Farm Loans - Survey - Casualty
Abstract of Title

Fire, Automobile and
Life Insurance

OFFICE IN MASONIC BUILDING
P. O. Box 31 Phone 67

Russellville, Arkansas

A. M. VAUGHT & CO.

*"The Store of Correct Fashions
And Better Garments"*

Russellville, Arkansas

THE LEMINGS

Drugs and Everything

Since 1900

PHONE 24

"THE REXALL STORE"

Russellville, Arkansas

READY-TO-WEAR

MILLINERY

HUNT-WALDEN INC
THE BEST AT POPULAR PRICES

RUSSELLVILLE'S LEADING DEPARTMENT STORE
SUPPORTING AND BOOSTING ARKANSAS TECH

SHOES

HOSE



BANK OF RUSSELLVILLE
ARKANSAS

A Bank of Service and Safety



Established 1897



-
- | | |
|------------------|-------------------|
| A. J. MATHEWS | Chairman |
| GEO. S. NEAL | President |
| R. L. JENKINS | Vice-President |
| L. M. REED | Cashier |
| M. J. HICKEY | Assistant Cashier |
| GENEVIEVE HARMON | Bookkeeper |
| PAUL KOEN | Bookkeeper |
| HERVIE HILL | Bookkeeper |
-

**COURTEOUS TREATMENT EXTENDED
TO EVERYBODY**



October 22-31. Magnolia nosed us out 7-0. Attended a night football game. Don't know who won. Pep meeting. Coach stops the football men from walking with the femmes. Extraordinary pep meeting in Armory. Everyone cut 11 o'clock classes. Henderson defeated us 7-0. Went to dance that night and was it a doodle. Work started on the new athletic field. Big Carnival in town. I'd like to set one of those grass skirts on fire. Cherokee Bill goes on a raid. Party at Sallie's. Went hiking. M. E. J. sprains ankle at night game, probably due to a long end run. The Goblins were at the play on Hallowe'en. Y. W. C. A. has party.

November 1-7. Vanquished the blond enemy after so long. Quit my job. Freshmen have spasmodic meeting. Caskey and Roosevelt win. Pep meeting. Went on a picnic, what fun. Dads Day was a success, defeated Teachers 26-0. Jeffries is injured. Went on a hike to Beaumont. Aren't these labs a pain. --

November 8-14. Pep meeting for Armistice Day game. Tech goes to Little Rock on special train. We tie Ouachita 0-0. Gee, wasn't it cold on those bleachers. I will always remember the house of many gables. On the return trip the lights were out in the coaches. What a day. Oh, my Gosh. Band broadcasts over KGH. Annual staff members selected. Went to the rocks on the Arkansas river and had a steak broil.

November 15-22. The freshmen have revolted, now was that nice. Squabble over Thanksgiving Holidays. Freshmen won't run belt line. This revolt is beginning to look like war. Ed's don't forget this, "Watch those home town sweethearts." F. F. A. Convention. Glee Clubs and Dramatic Clubs make their first appearance. They're good.

November 23-30. Romance dragging. Tech defeats the Boll Weevils 13-6 in a good game. Thanksgiving Holidays begin. Another victory for Tech. We defeated C. of O. 20-6. Don't funny reports get out. Polly King visits us, and are we glad. God give us justice, the great Jeffries is *|?æ.

December 1-8. Big football game, the Mules vs. the Bulls. The Queen is crowned; both bands play. Had my beauty snapped for the Annual today. Night games are getting chilly. New fence around Buerkle field. We all mourn the loss of our friend Hugh Wright.

December 9-31. Went to the battery dance; it was the best of the year. Basketball men report. This sleet and snow is terrible. Y. W. C. A. banquet at the Palace Hotel. Football Dance at the country club; can those boys throw a dance? Almost got my girl campused for being late. Won our first basketball game from Spokane, Mo. Independents, 33-26. Bade the old school good bye for the Christmas Holidays.

January 1-15. The big return. A Ghost in Main building. T Association picnic. This foolishness has got to stop. You go your way and I'll go mine after this last dance. The Warriors defeat us, 29-28, at basketball.

REID'S STUDIO



*Photographs
Live Forever*



FOR TECH
First, Last and Always

Compliments of
Bernice's Beauty Shop
Russellville, Arkansas

Compliments of
Will D. Vance
ABTRACTOR
Insurance Real Estate

Trade at
**Hamilton Bros. Drug
Store**
Everything First Class
310 W. Main Russellville

Compliments of
Tribune Printing Co.
Commercial Job Printing
of Quality

Compliments of
Hays & Smallwood
Attorneys-at-Law

Compliments of
Little Model
Russellville, Arkansas

Compliments of
Berry, The Tailor
Russellville, Arkansas

Compliments of
Buerkle Buick Co.
BUICK - PONTIAC
Atwater-Kent Radios

Compliments of
The Sterling Store
Where Students Like to Trade

Harcourt & Co., Inc.
Louisville, Kentucky
Manufacturing
Stationers - Engravers
Jewelers

Compliments of

Russell's Bankrupt Store

Russellville, Arkansas

Compliments of

**Blount-Baldwin
Company**

Russellville, Arkansas

**Scott-Mayer Commission
Company**

Wholesale Distributors

Home Plate Brand Good Things to Eat
Little Rock Hot Springs

Compliments of

Taylor's Greenhouses

"FLOWERS BY WIRE"

Russellville, Arkansas

Russellville Printing Co.



**CATALOG AND COM-
MERCIAL PRINTERS**

Russellville, Arkansas.



COUNTY OFFICIALS

A. B. PRIDDY *Circuit Judge*

AUDREY STRAIT *Prosecuting Attorney*

M. L. TURNBOW, SR. *County Judge*

J. LEONARD BELL *Sheriff and Collector*

JIM TUCKER *Circuit Clerk*

JEFF BIFFLE *County Clerk*

J. T. MURPHY *Tax Assessor*

FAY L. PRICE *County Treasurer*



COWAN-GOODWIN CO.

Clothing, Shoes and Furnishings

"FOR MEN AND YOUNG MEN"



We carry a large stock of
COLLEGE CLOTHES
For College Men

If you like a Tailor Made
Suit or an individual pat-
tern, see our line. Over 500
samples to select from. We
guarantee to fit you.

If there is anything new
for men and young men we
have it.

NEWEST IN STYLE

BEST IN QUALITY

AT REASONABLE PRICES

Make Our Store Your Hangout

Wallace Cowan

Joe Goodwin



RUSSELLVILLE, ARKANSAS

Manufacturers of

SHOOK, BARRELS, KEGS AND ALL CLASSES TIGHT COOPERAGE,
TIGHT SAP JOINTED STAVES AND CIRCLED HEADING

Russellville,

Arkansas

Compliments of

Smith's Shoe Shop

106 Commerce Ave.

Russellville, Arkansas

Quality - Service - Price

*Tested Seeds and Plants
Field and Garden Seeds*

J. A. CLIFTON
SEEDMAN

Twenty-Third Annual Catalog Free

Link-Way Stores Co.

STORE NO. 1
Russellville, Arkansas

PHONE NO. 8

The Store That Saves You Money

Compliments of

GEORGE W. NEAL
STATE LAND COMMISSIONER

Little Rock,

Arkansas

R. L. JENKINS, Druggist

Russellville, Arkansas

WE DON'T RUN A VARIETY STORE. WE MAKE A SPECIALTY
OF THE DRUG BUSINESS; NOT A SIDELINE.

DRUGS

STATIONERY

OFFICE SUPPLIES

Gents' Furnishings

LADIES' READY-TO-WEAR

Dry Goods - Shoes

You'll Like To Trade At

THE FAIR STORE

Come To See Us—Often

Russellville Plumbing & Heating Co.

F. E. CAMPBELL, PROP.

PHONE 282

Russellville, Arkansas

Compliments of

Dr. A. J. Caisson

DENTIST

Russellville, Arkansas

J. C. Faulkner & Son

Jewelry and Gift Shop

Registered Opticians

214 West Main Street

Russellville,

Arkansas

Ward & Caudle

Attorneys

PHONE 117

Russellville, Arkansas

J. A. Webb

General Insurance and Bonds

Oldest and Longest Agent in Town

L. Stewart Wight

Life Insurance

106 Boulder

Russellville

**Roy's Cafe & Sandwich
Shop**

Offers You the Best in
Service and Quality

For Real Enjoyment, Eat

PURITY ICE CREAM

Its Flavor is Delicious

WE CATER TO PARTIES

PURITY ICE CREAM COMPANY

January 16-31. Semester exams. What's the matter with the Sophomore Engineers. The boys give the girls a serenade. Exams end. I heard something about a chain gang today. The track season holds promises for success. A committee from the legislature visits us. Our basketball team is doing well. Booing as practiced at Tech is the last word in perfection. The girls basketball team is working well.

February 1-10. Campus beauties nominated. Science Club holds initiation. Drastic meeting of discipline committee. Road scholarships presented. A fox hunt is organized. No love have I. Criswell, Langley, Henderson, Churchill, and Spencer leave for Arkansas University. We will certainly miss those boys.

February 11-28. And now we're back together again" is my these song. Debating is now in the shaping process. Gardner elected president of the Student Council. Parties galore. Penthouses are swell. The gang took some pictures today. Six weeks exams.

March 1-15. Student Council elected. The whole school mourns the death of our little friend, Jennie Bess Storey. Dramatic club throws a bridge party. Cut chapel to do a little courting. Russian chorus renders a delightful program. Laurant, the magician, mystifies us. Buerkle field is a busy place with the track team, baseball team, and football team all in action.

March 15-31. Penthouse for sale. Manless dance. Agri and Home Economics departments hold joint meeting. Parker Hill is a popular place these warm afternoons and nights. Nine weeks exams. Went to Freshman dance. Boys serenade. Measles break out in the dormitories. Track team goes to Fort Worth; wins fourth place. Isn't my red headed woman swanky.

April 1-12. Overall dance in the armory. What spirit, maybe I should say spirits. Dating bureau established. Engineers party a success, ask Lance. Our Science Club really knows how to throw a picnic. Spent Sunday afternoon at the dam with my one and only. Y. W. C. A. has party. Tech wins a track meet from Hendrix.

April 13-21. Spring Holidays begin. Harriet Calloway has a snappy orchestra. Mary Ellen didn't get any easter eggs. The gang goes to Van Buren for the spring holidays. Spring fever is raging over the campus. Who said Dorothy Fountain wasn't a swell baby?

April 22-30. Big dance in the mule barn! All the Agris were there. It is a break to have a girl taking cooking. The plans for the new Boys' dormitory are great; wish I was coming back next year. Spent a delightful day in the park—not alone. Our track team lost to Ouachita by one point but won from Monticello. Went to the Freshman-Sophomore picnic held at the Country Club. Couldn't stand more than one a month like that. The faculty has never treated us better.

May—. Did we win the State track meet, and how—47½ to Ouachita's 33, with the other colleges trailing far behind. Dramatic Club presents an interesting one-act play. Agri Day went over in a big way. Graduation days are here. THE END.



Designed and Engraved by

PEERLESS ENGRAVING COMPANY

ARTISTS, PHOTO-ENGRAVERS



Little Rock, Arkansas



DRINKS

CIGARS

WE SINCERELY APPRECIATE HAVING THE HONOR OF
SERVING THE STUDENTS OF ARKANSAS TECH

And We Hope That We Can Continue Serving the
"Grads" of Tech Through the Coming Year, "ByJo."

JOE ROGERS, Druggist

PHONE 139

CANDY

DRUGS

J. T. LLOYD CO.

309-311 Louisiana Street
Little Rock, Arkansas

"SPORTING GOODS FOR
GOOD SPORTS"

PHONE 2-1211

ROSS CAFE

Fountain Service - Curb Service

Sandwiches of All Kinds
Plate Lunches and Regular Dinners
Dining Car Coffee

TRADE AT

COCHRAN'S
THE BEST FOOD STORES
AND SAVE

ARKANSAS TECH BOOK STORE

It is the Book Store's policy to give to the students
the things they want at the lowest possible cost.
If we do not have what you want, it is our pleasure
to get it for you.

BOOKS

STATIONERY

Compliments of
Woody's Eat Shop

K. C. Steaks

Natural Gas

The Ideal Fuel

CLEANER, CHEAPER
AND BETTER

Compliments of
**Hamilton Insurance
Agency**

Compliments of
**Public Utilities Corp.
of Arkansas**

**It's Smart to Wear
Comfortable Shoes**

Do you know you spend 60 per cent of your life in your shoes and that it pays to be sure they are right?

We carry in stock
AAAAA to EEE widths
Let Us Fit Your Feet

Thompson Shoe Store
Russellville, Arkansas

G. C. McKennon, Jr.
DENTIST

OVER BANK OF RUSSELLVILLE
Russellville, Arkansas

**"M" SYSTEM GROCERY
& MARKET**

Clean and Sanitary
W. H. Norwood & Son
Russellville, Arkansas

FRIENDSHIP

THERE'S NOTHING OF AN EARTHLY NATURE
MORE VALUABLE THAN FRIENDSHIP

ICE refrigeration is the friend of the entire family. It is an UNFAILING, UNVARYING guardian of FOOD flavor, weight and appearance as well as bacteriological condition. Like all true friends ICE is willing and ready, to give its life for you.

ARKANSAS-OKLAHOMA ICE COMPANY
MANUFACTURERS OF DISTILLED WATER ICE

This Book is Bound in a
BERGER QUALITY COVER

WE SPECIALIZE IN SCHOOL ANNUAL COVERS
AND HOT EMBOSSED PAPER COVERS FOR
CATALOGS, ANNOUNCEMENTS, INVITA-
TIONS, DIPLOMAS, ETC.

THE H. O. BERGER COMPANY

328 South Jefferson Street

CHICAGO,

ILLINOIS

THE STAFF IS DEEPLY APPRECIATIVE
OF ITS PATRONAGE OF THE ADVER-
TISERS IN THIS ISSUE OF THE AGRI-
COLA.

The year is gone and the chapter closed. We can only re-live the past in memory. May this closed volume be re-opened many times and the scenes of happiness flash across our minds. May we oft live again the days at Tech.